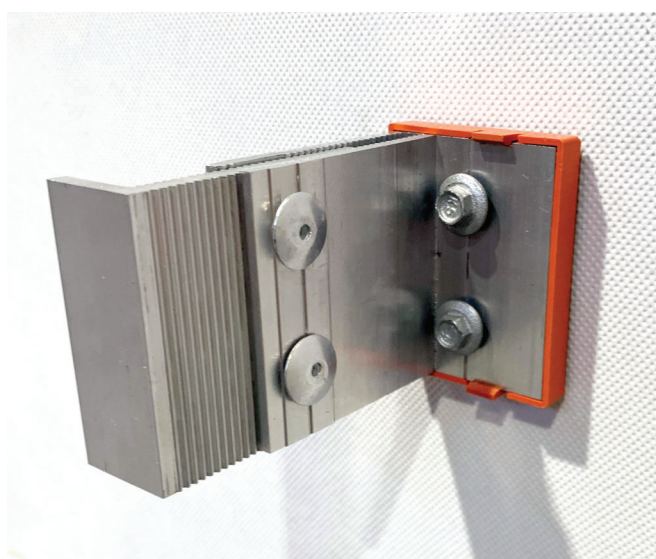


RL AZ BRACKET

For RoofLogic Façade Systems

The AZ Bracket is an adjustable structural bracket for Warm Wall Systems



RL AZ Bracket during installation

DESCRIPTION

The RL AZ Bracket is a versatile structural bracket designed for wall cladding systems that incorporate external insulation. Its adjustable depth allows it to accommodate various insulation thicknesses while also providing the flexibility to straighten the substrate if needed.

Serving as a secure attachment point for the RL Rhom Rail, the bracket plays a key role in the cladding system. The cladding is then installed over the Rhom Rail assembly, typically using mechanical fasteners through the front wall of the rail.

Manufactured from high-quality 6063-T5 aluminum alloy, the RL AZ Bracket features a 5 mm polypropylene thermal break base with a 1.5 mm EPDM gasket. The thermal break minimizes thermal bridging, enhancing the energy efficiency of the cladding system, while the EPDM gasket provides a reliable seal between the bracket and the rain control layer or substrate, preventing moisture ingress.

APPLICATION

- The AZ Bracket is to be used as a component within a properly designed cladding system. Consult RoofLogic in respect to design and project considerations.
- The AZ Bracket is designed to be installed in conjunction with external insulation such as Smart Façade or Stonewool Insulation.

| Technical Data - AZ BRACKET | | |
|---|--|-----------|
| Base length/width (mm) | 60 mm x 45 mm | |
| Overall Depth (mm) | 70 mm-130 mm | |
| Maximum/minimum insulation thickness | 50 mm-120 mm | |
| Loadings | | |
| (ULS) | Edge | Main Body |
| Positive | 2.0kPa | |
| Negative | 2.5kPa | 1.3kPa |
| Spacings | | |
| | Edge | Main Body |
| Between rails | 1200 mm | 1200 mm |
| Between AZ Brackets | 300 mm | 600 mm |
| Fixing into AZ Bracket | | |
| Rhom Rails | Bremick 2 x 12g x 50 long drilller hex washer head | |
| Cladding Clip | Bremick 2 x wafer screw no. 2 10 g x 30 | |
| Fixings into studs: | | |
| Steel 1.6BMTT, G450, Z275 Base Material | Konnect Steeltite hex head with bonded washer. Grade 304 stainless steel ST14-1490G304HSDWS | |
| Timber Substrates (Minimum embeddment 36 mm) | Konnect Steeltite hex head with seal. Grade 316 Stainless Steel TT14-10x50G316T17N | |
| Cladding Weight | Lightweight cladding <30kg/m2 | |

