

ROOFLOGIC SYSTEM:
ULTRATHERM XTREME
(SINGLE PLY MEMBRANE)

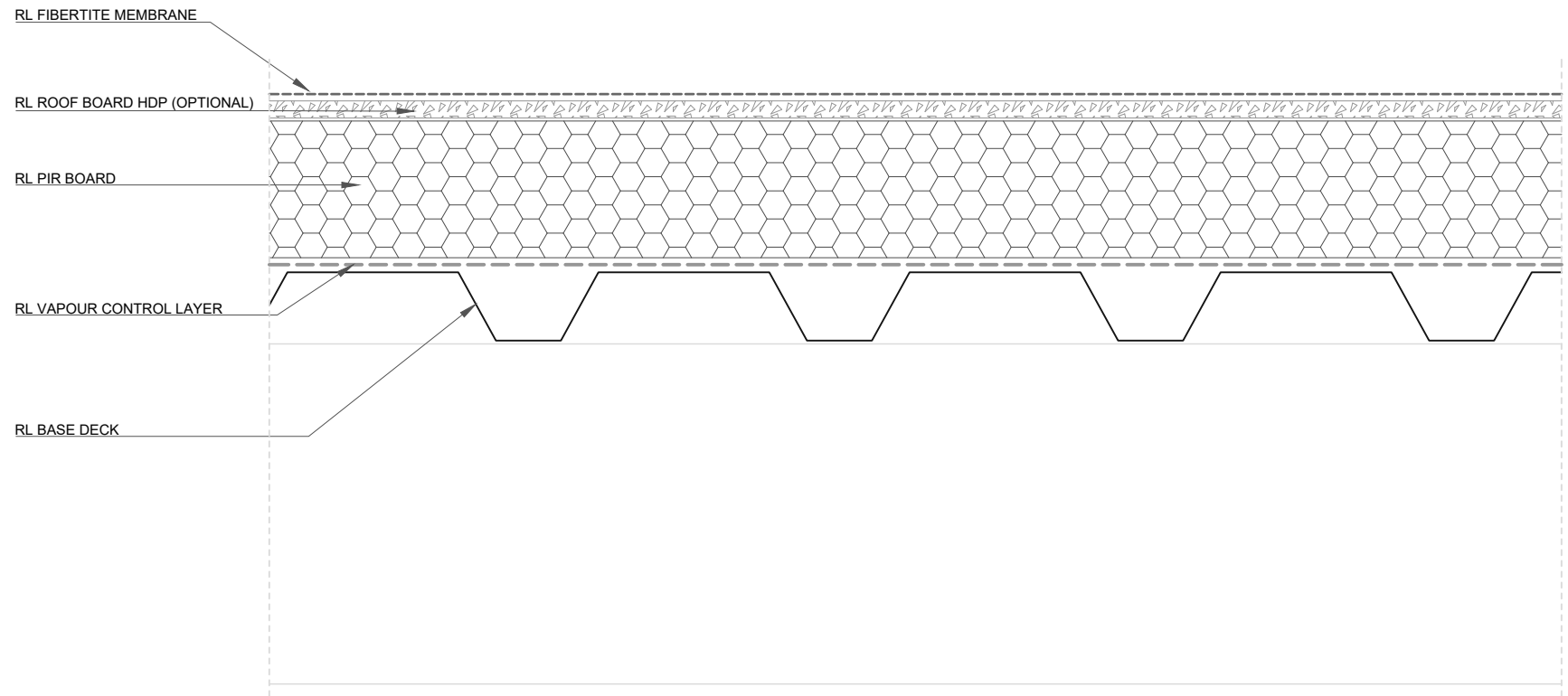
DRAWING:
TYPICAL ROOF - PIR CF

DRAWING NUMBER: 100

DRAWN SCALE: NTS

ROOFLOGIC.CO.NZ

This drawing is the copyright of Rooflogic. Modification of details for job specification requirements must be approved by Rooflogic. The building designer is ultimately responsible to ensure all building work is designed and constructed according to Building Code requirements, NZ standards and best code of practice industry guidelines. All components must be supplied by Rooflogic. Rooflogic reserves the right to alter or upgrade details at any time without prior notice.



ROOFLOGIC SYSTEM:
ULTRATHERM XTREME
(SINGLE PLY MEMBRANE)

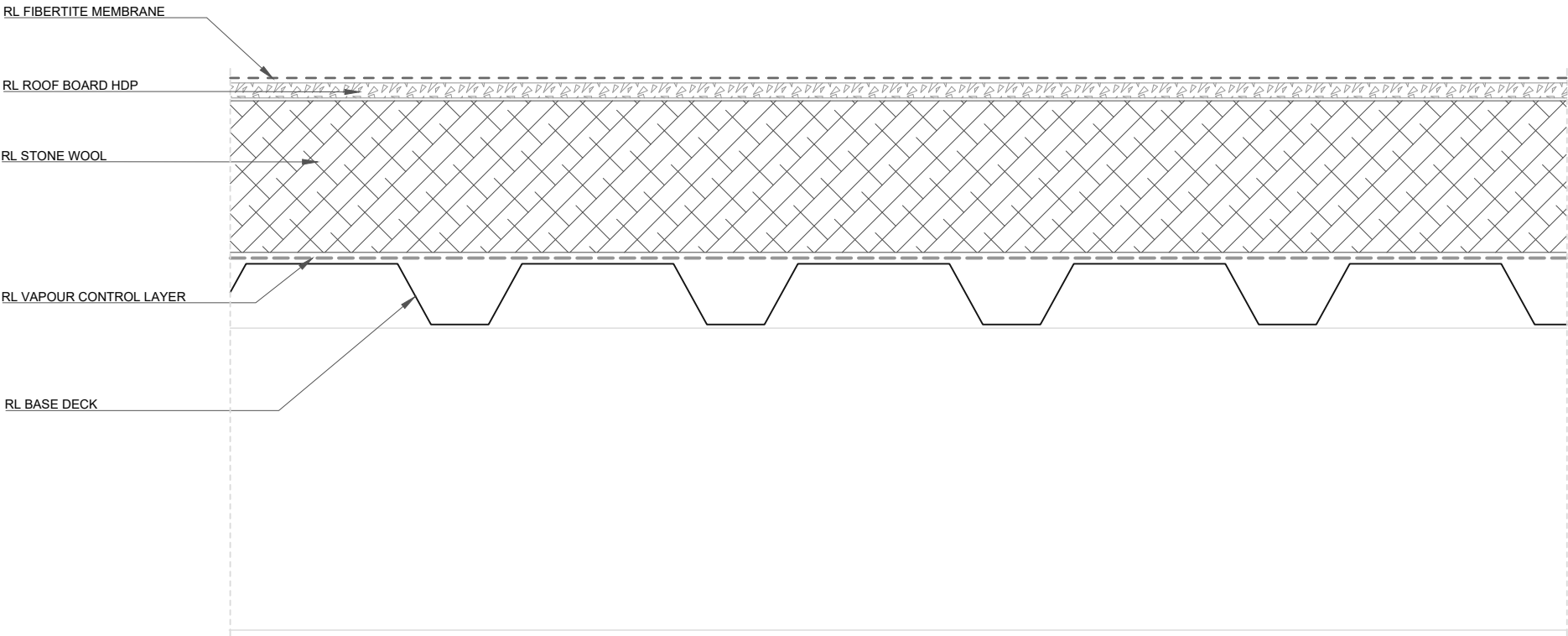
DRAWING:
TYPICAL ROOF

DRAWING NUMBER: 100B

DRAWN SCALE: NTS

ROOFLOGIC.CO.NZ

This drawing is the copyright of Rooflogic. Modification of details for job specification requirements must be approved by Rooflogic. The building designer is ultimately responsible to ensure all building work is designed and constructed according to Building Code requirements, NZ standards and best code of practice industry guidelines. All components must be supplied by Rooflogic. Rooflogic reserves the right to alter or upgrade details at any time without prior notice.



ROOFLOGIC SYSTEM:
ULTRATHERM XTREME
(SINGLE PLY MEMBRANE)

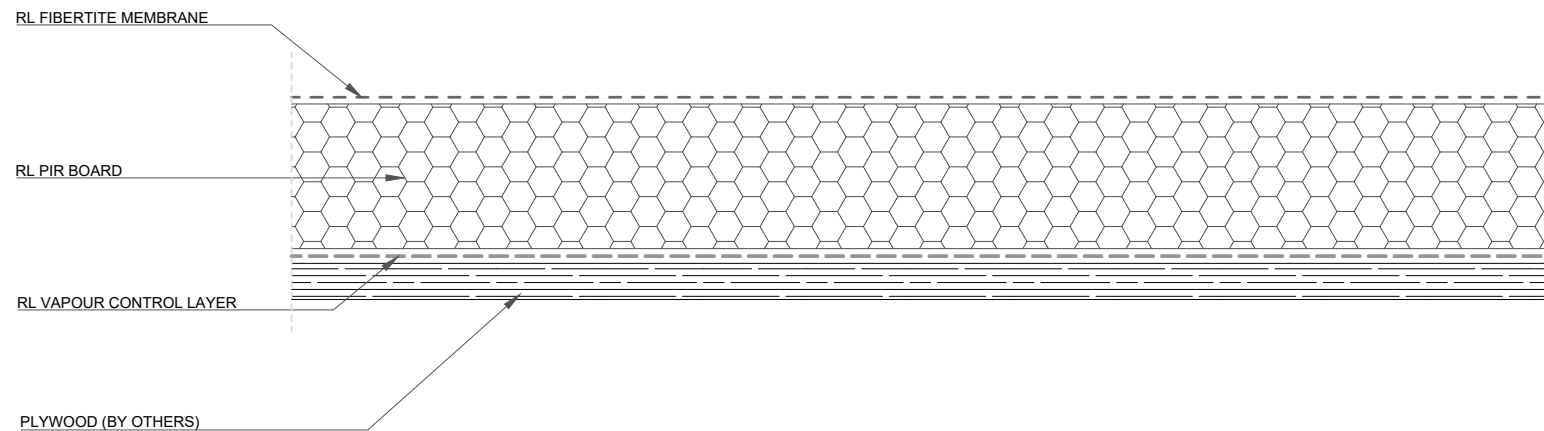
DRAWING:
TYPICAL ROOF - STONE WOOL

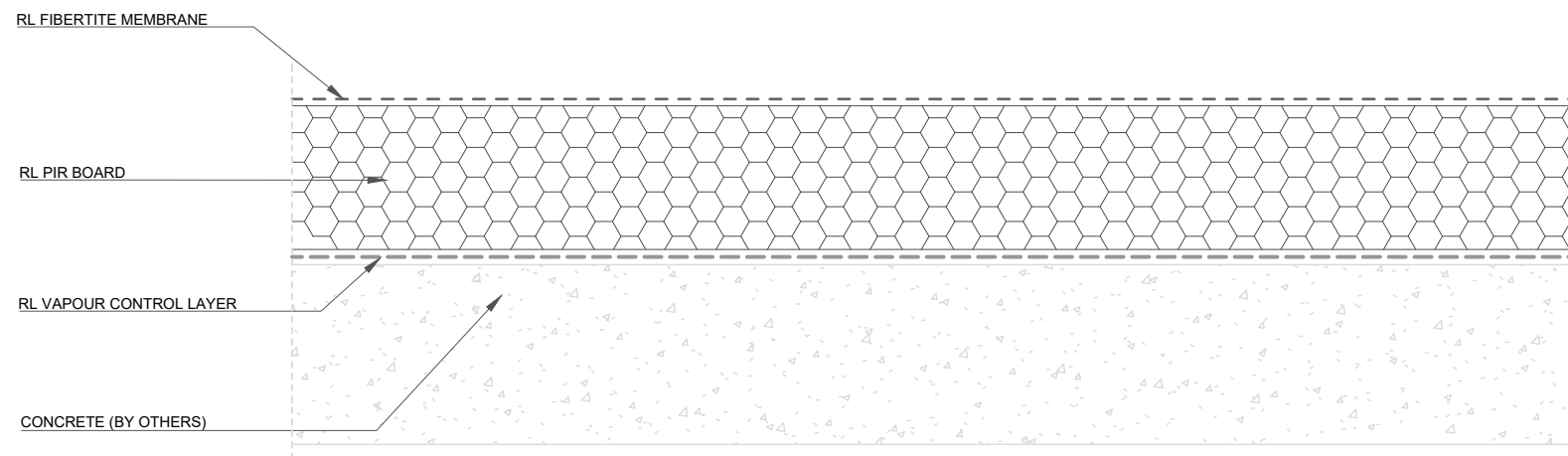
DRAWING NUMBER: 102

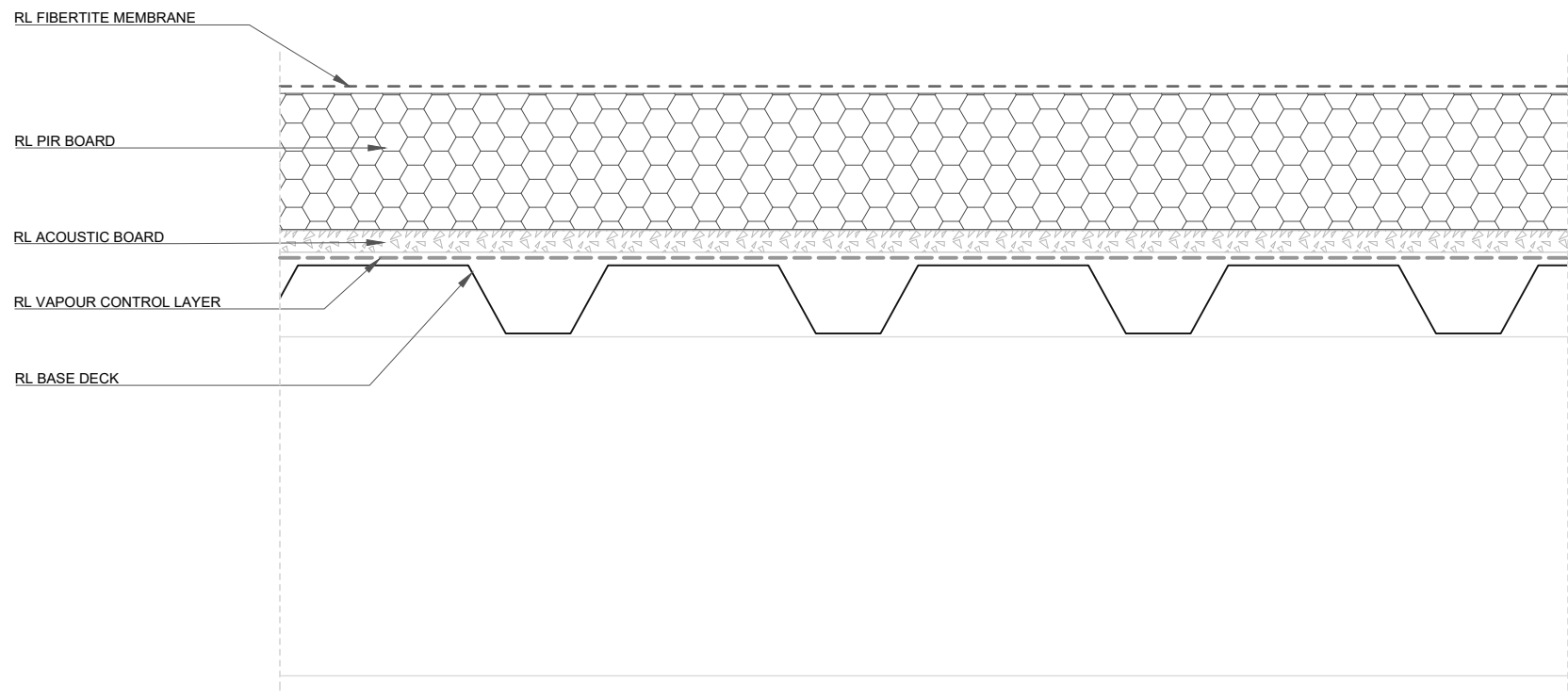
DRAWN SCALE: NTS

Rooflogic.co.nz

This drawing is the copyright of Rooflogic. Modification of details for job specification requirements must be approved by Rooflogic. The building designer is ultimately responsible to ensure all building work is designed and constructed according to Building Code requirements, NZ standards and best code of practice industry guidelines. All components must be supplied by Rooflogic. Rooflogic reserves the right to alter or upgrade details at any time without prior notice.







ROOFLOGIC SYSTEM:
ULTRATHERM XTREME
(SINGLE PLY MEMBRANE)

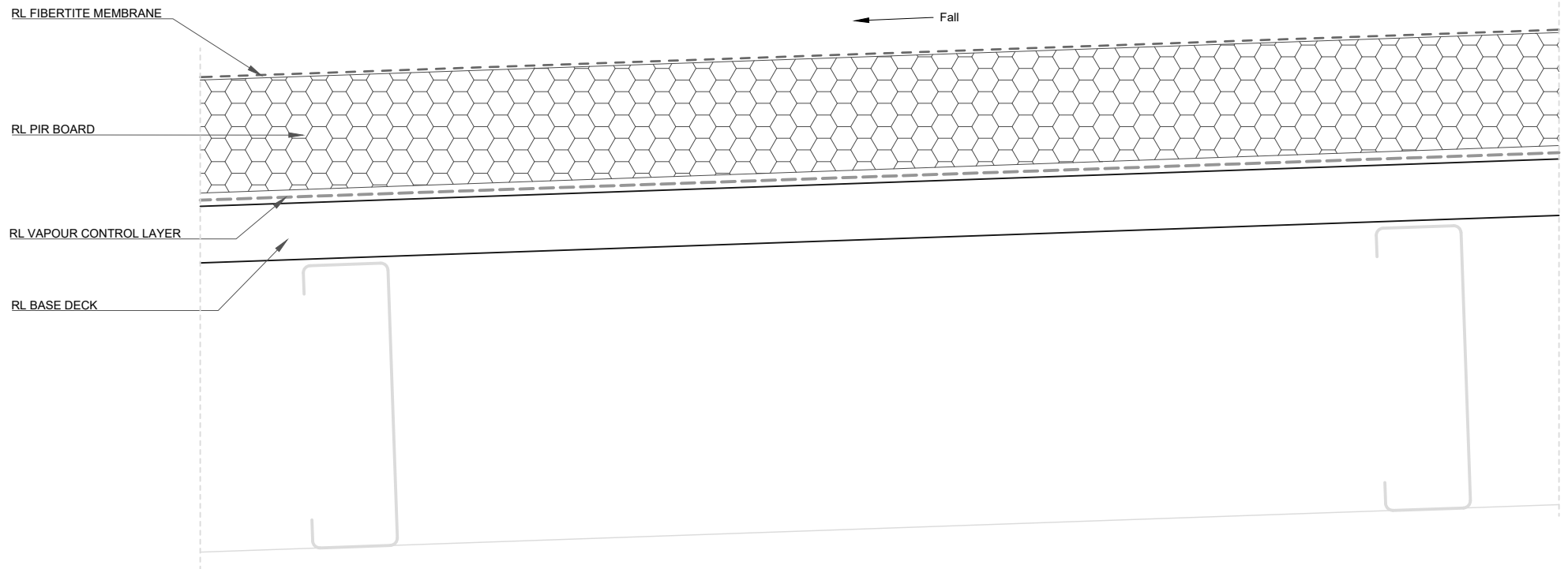
DRAWING:
TYPICAL ROOF – ACOUSTIC BOARD

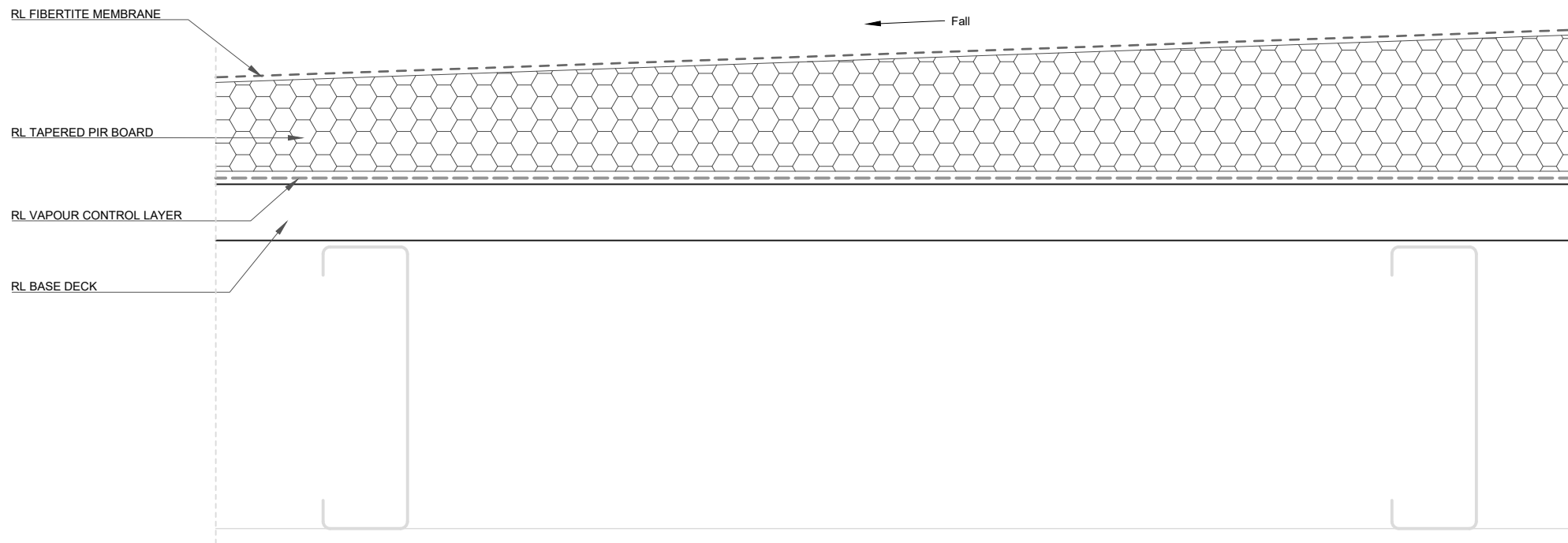
DRAWING NUMBER: 106

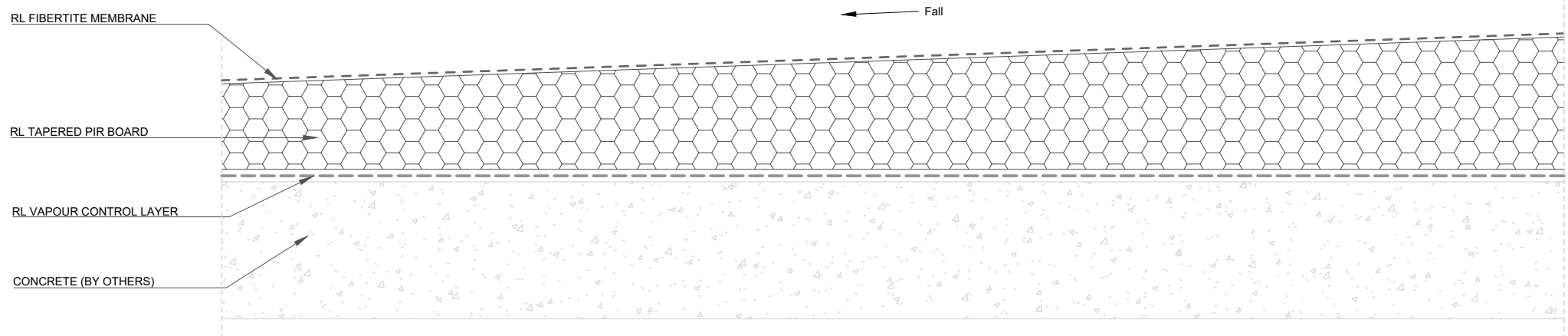
DRAWN SCALE: NTS

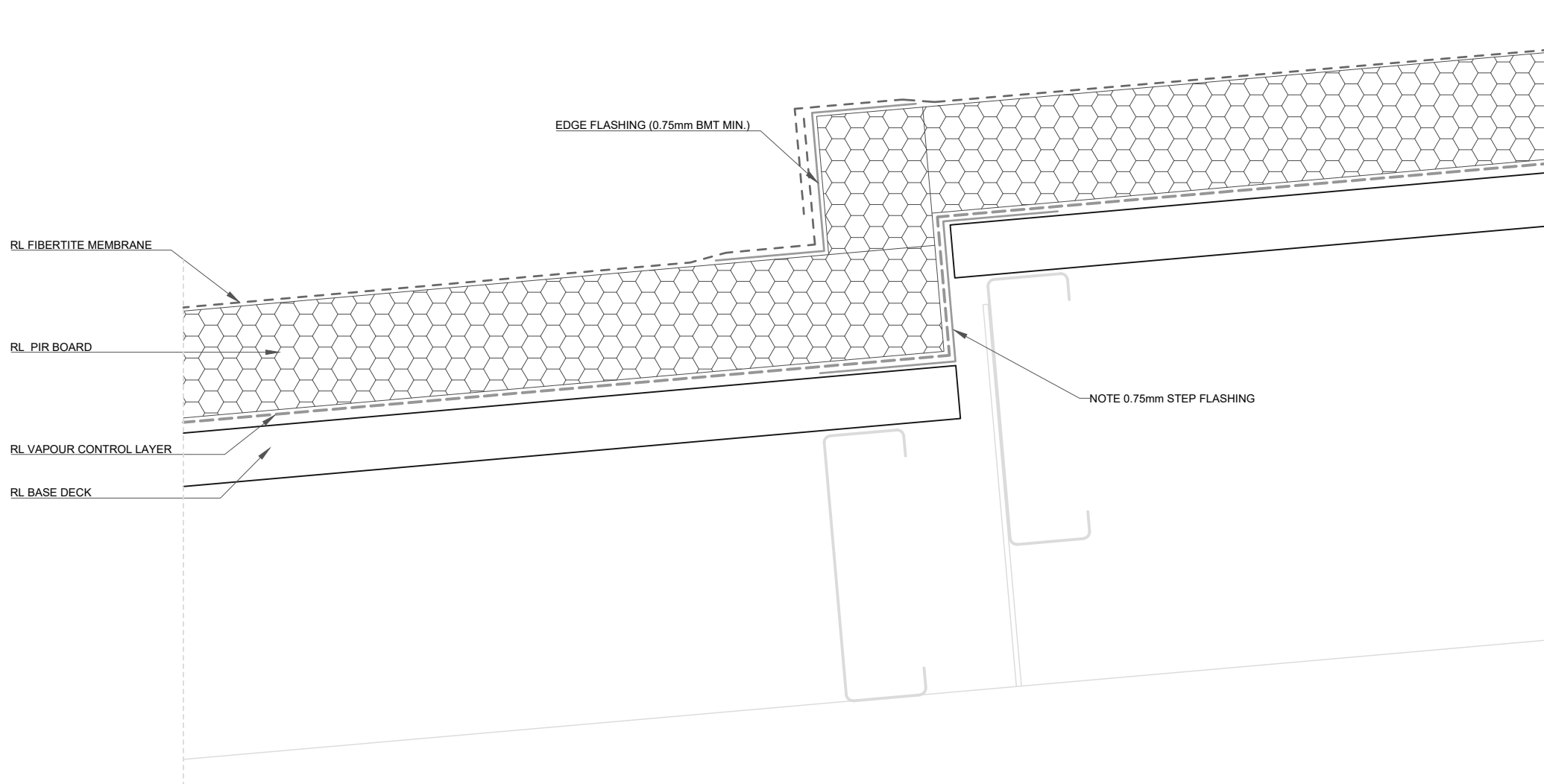
ROOFLOGIC.CO.NZ

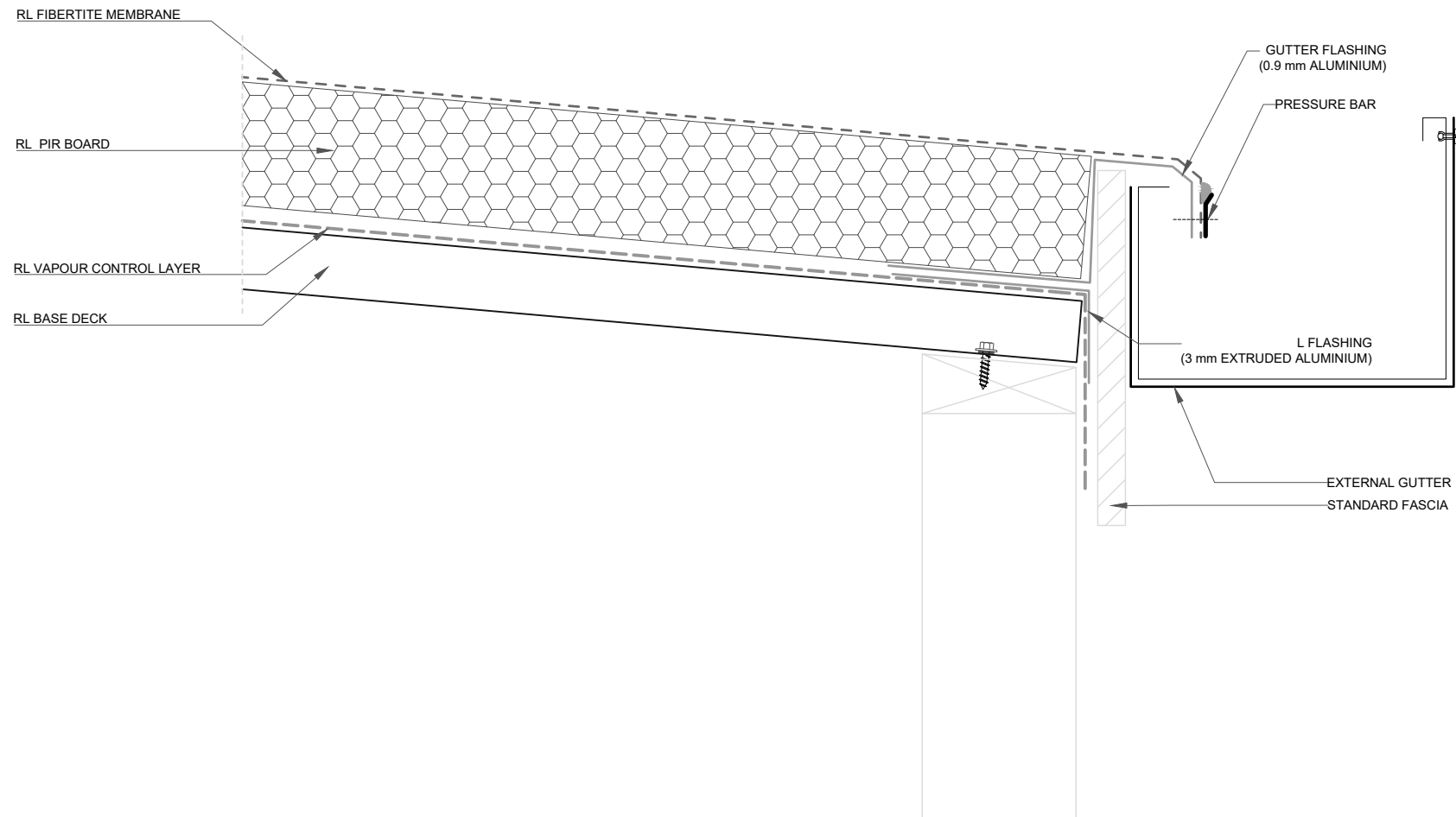
This drawing is the copyright of Rooflogic. Modification of details for job specification requirements must be approved by Rooflogic. The building designer is ultimately responsible to ensure all building work is designed and constructed according to Building Code requirements, NZ standards and best code of practice industry guidelines. All components must be supplied by Rooflogic. Rooflogic reserves the right to alter or upgrade details at any time without prior notice.

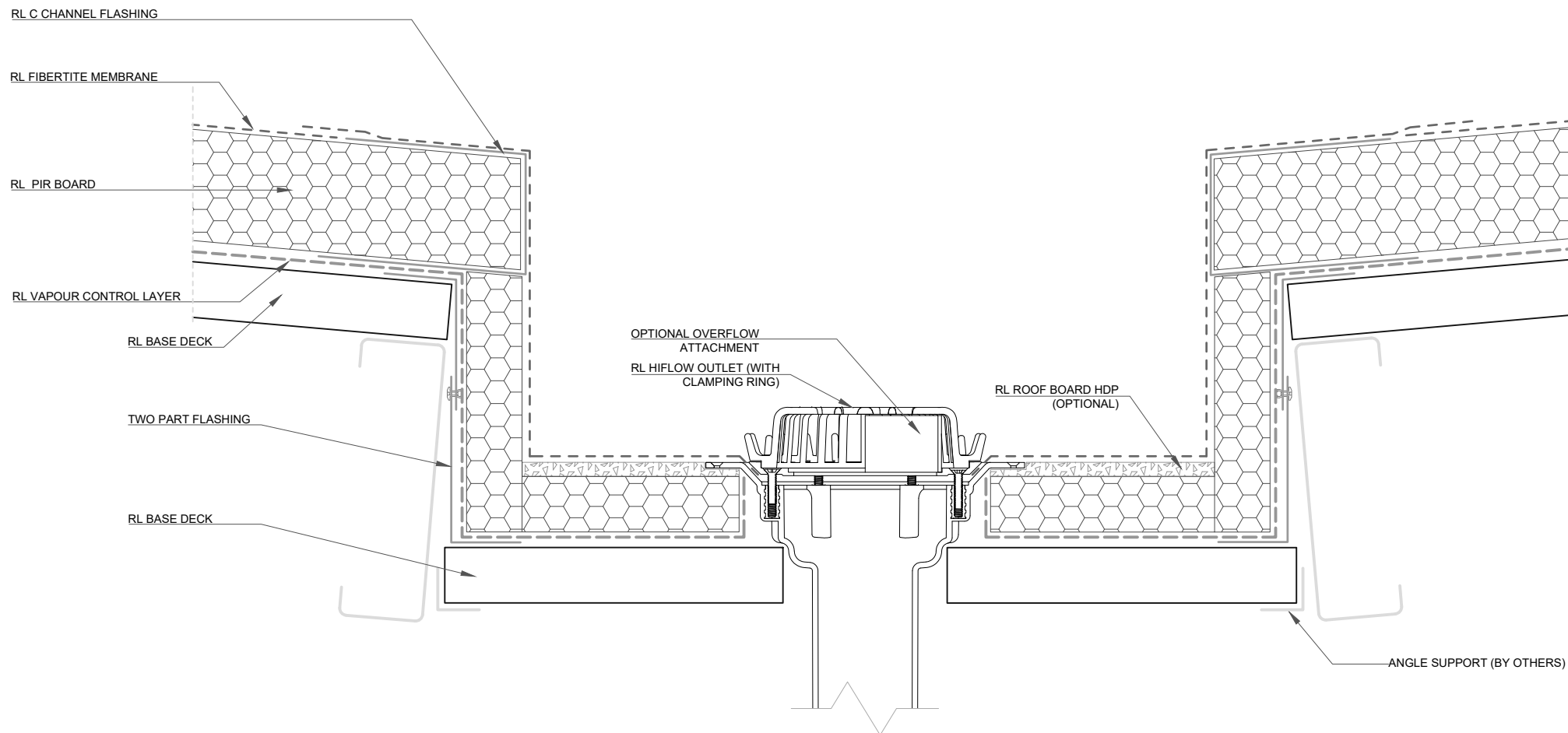


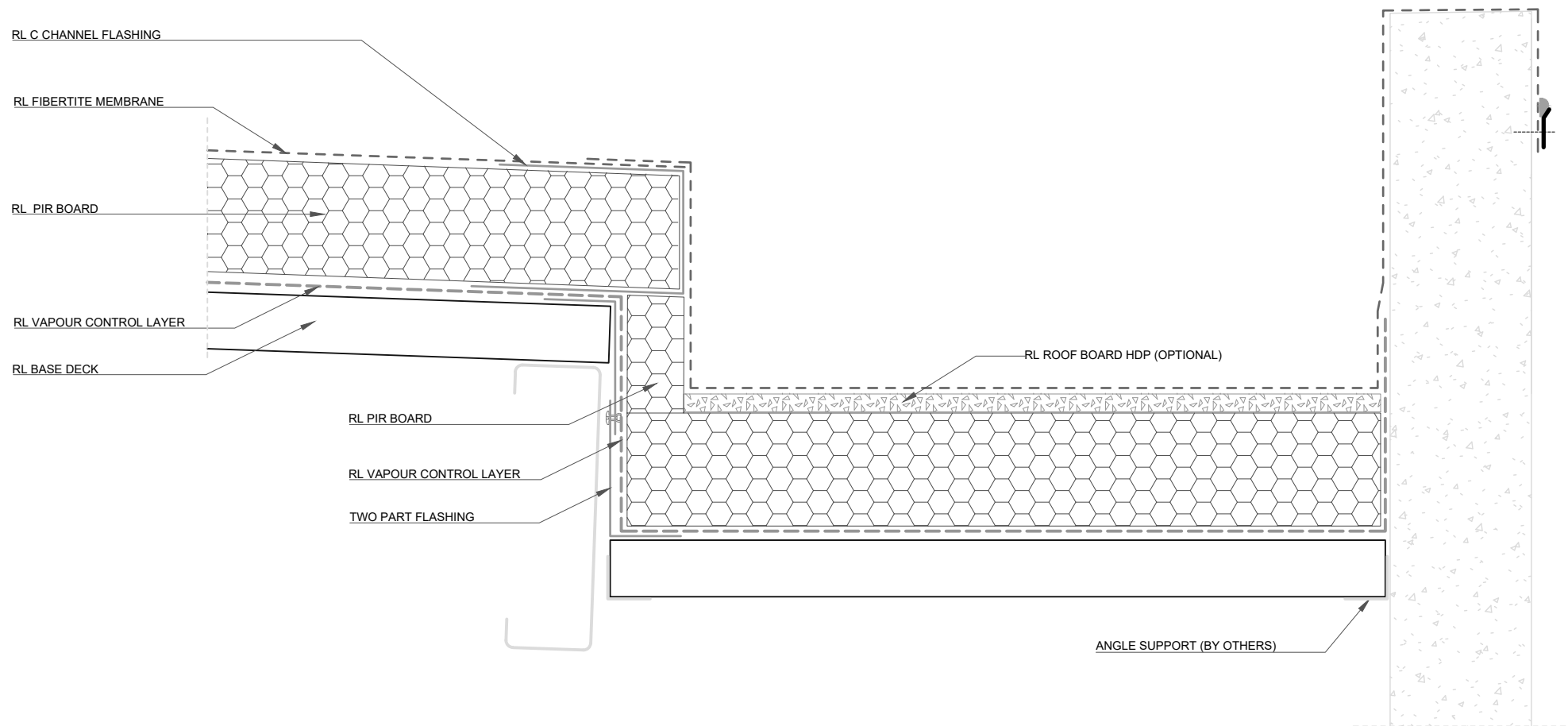


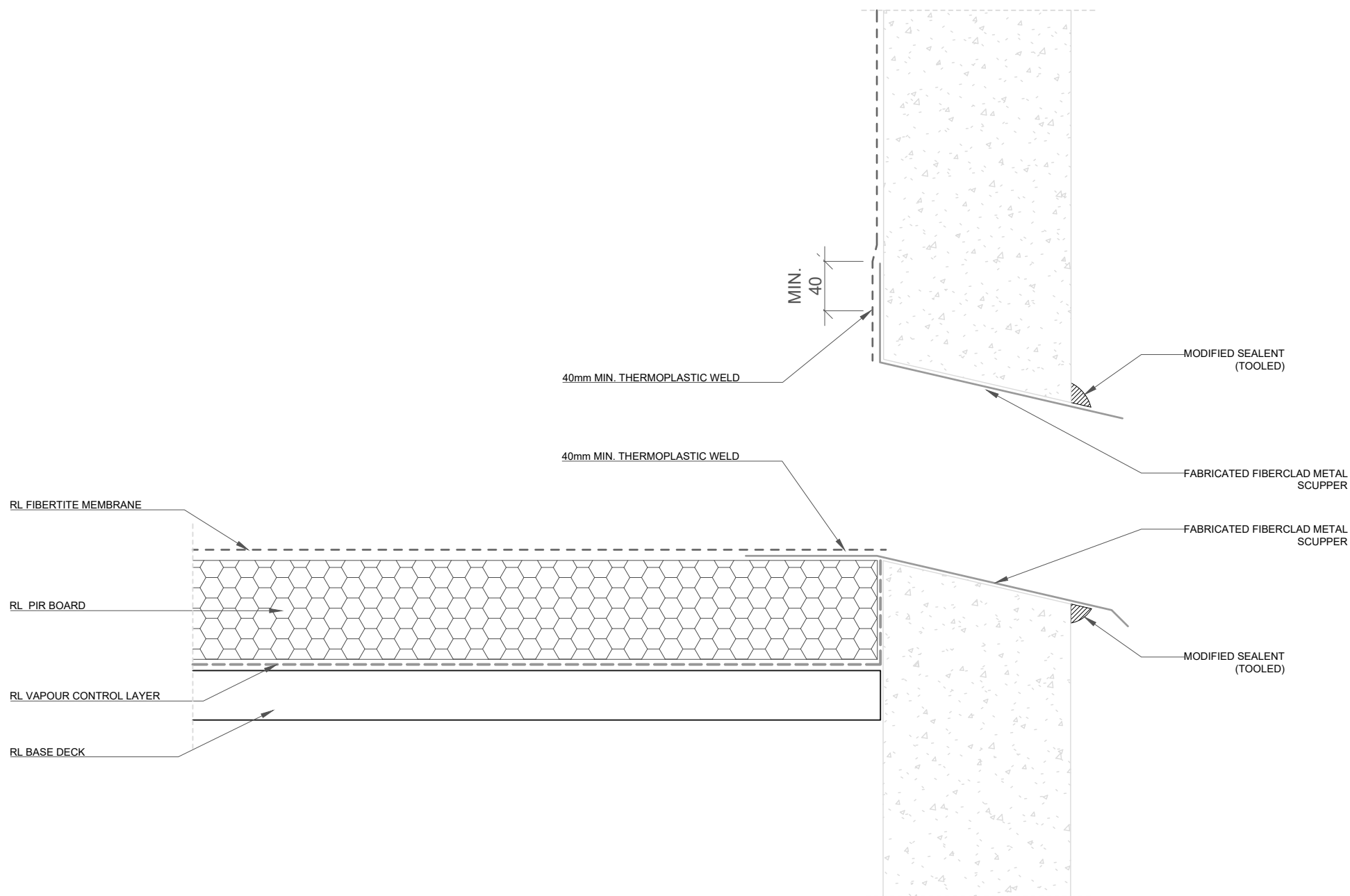


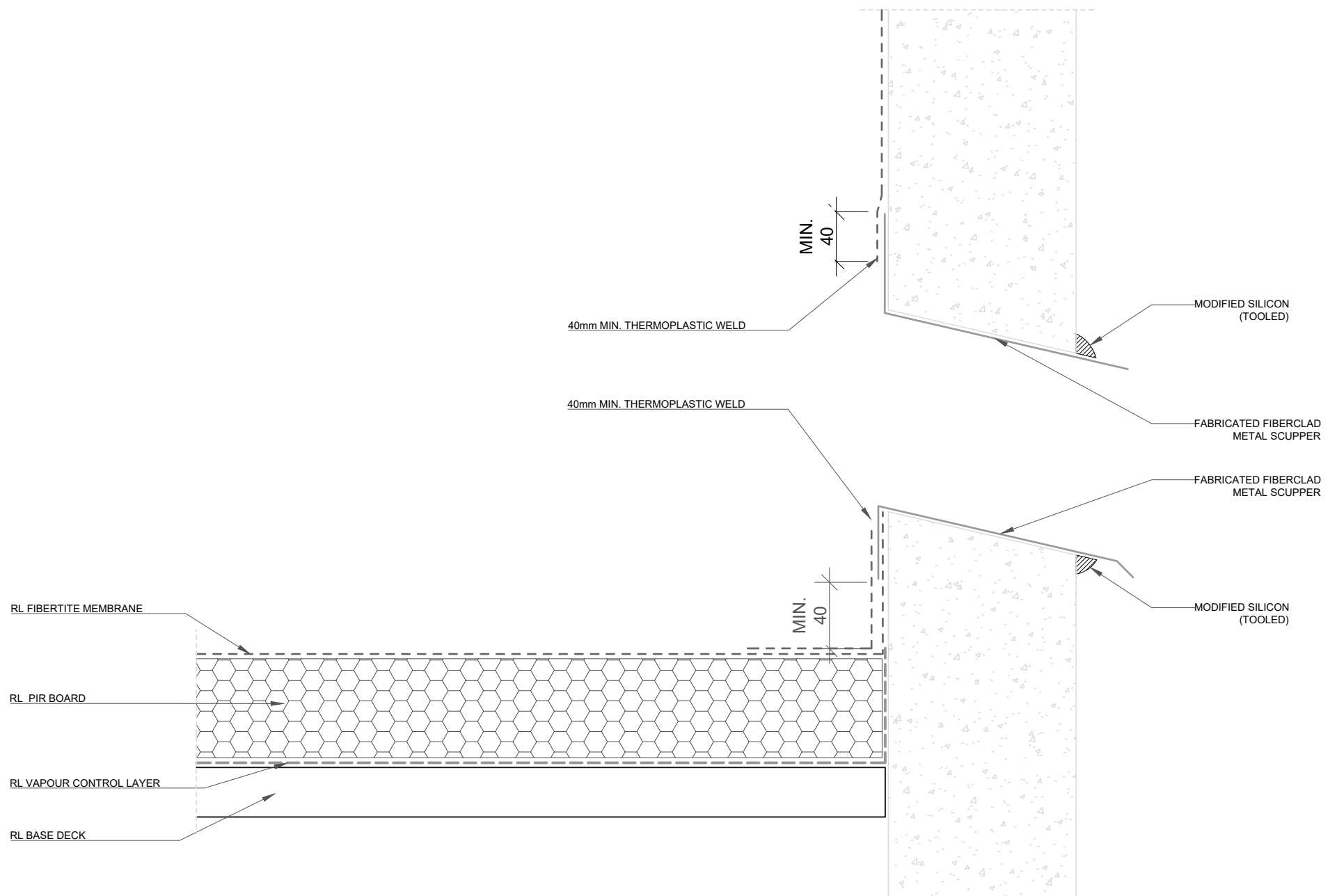


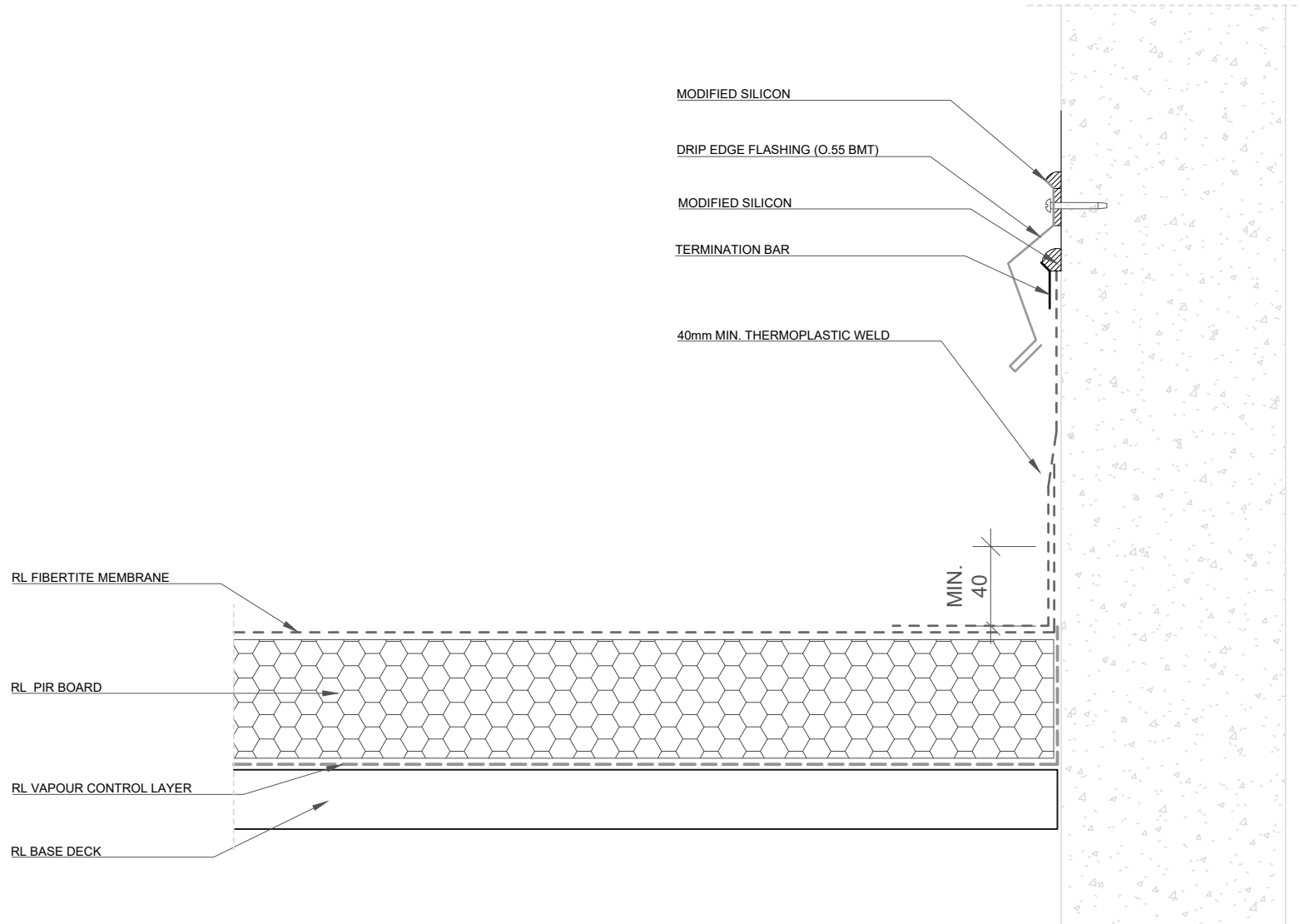


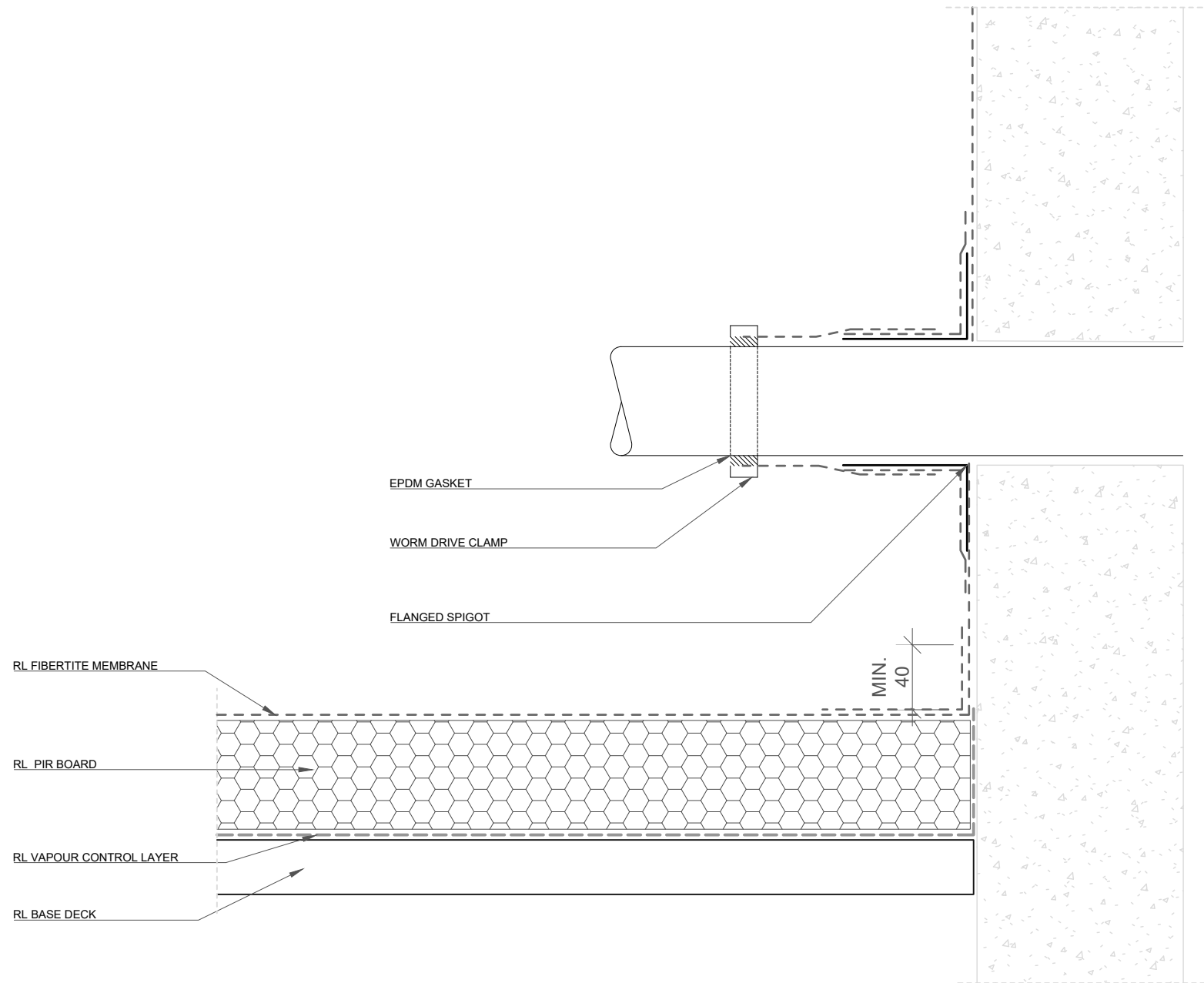


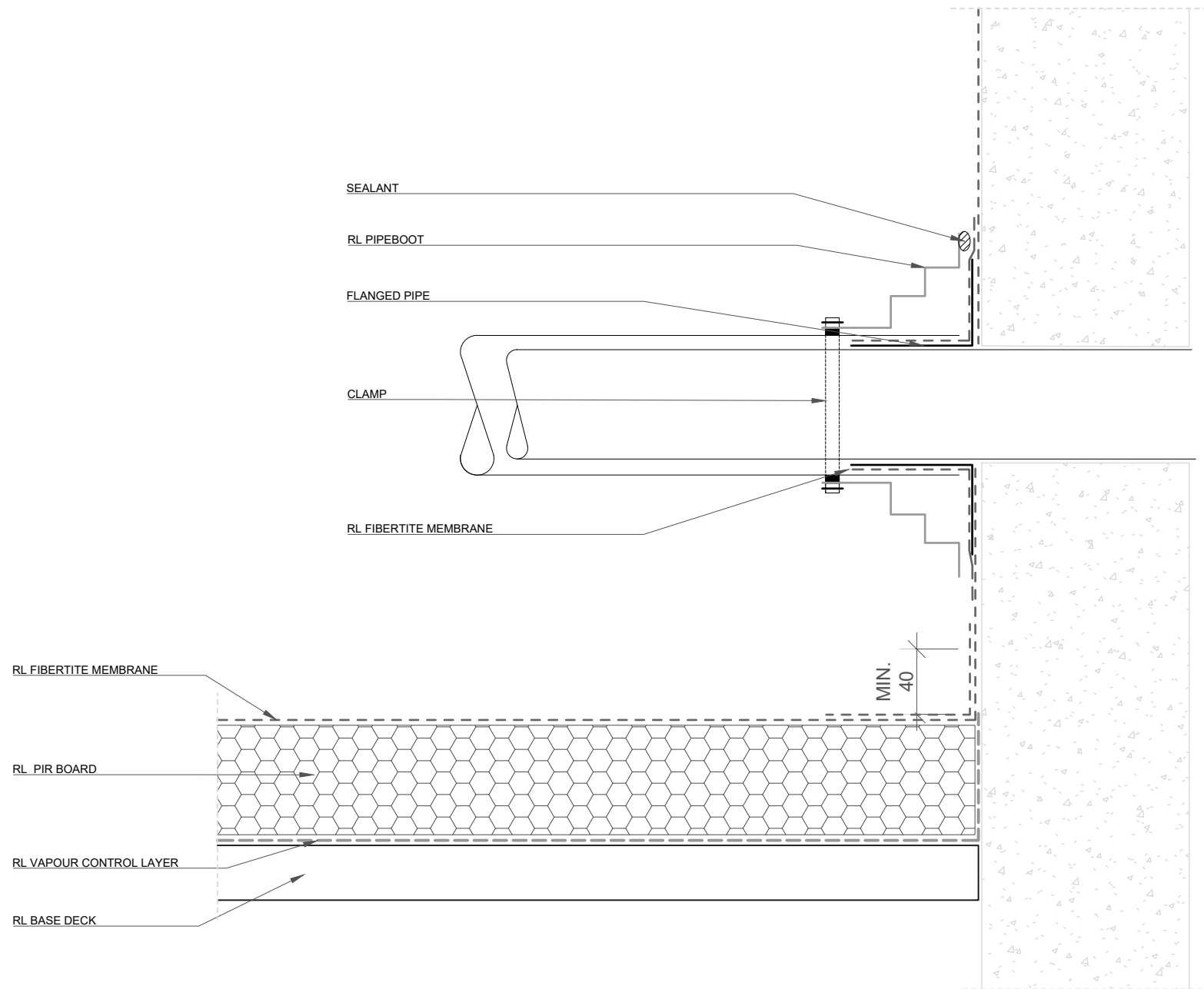


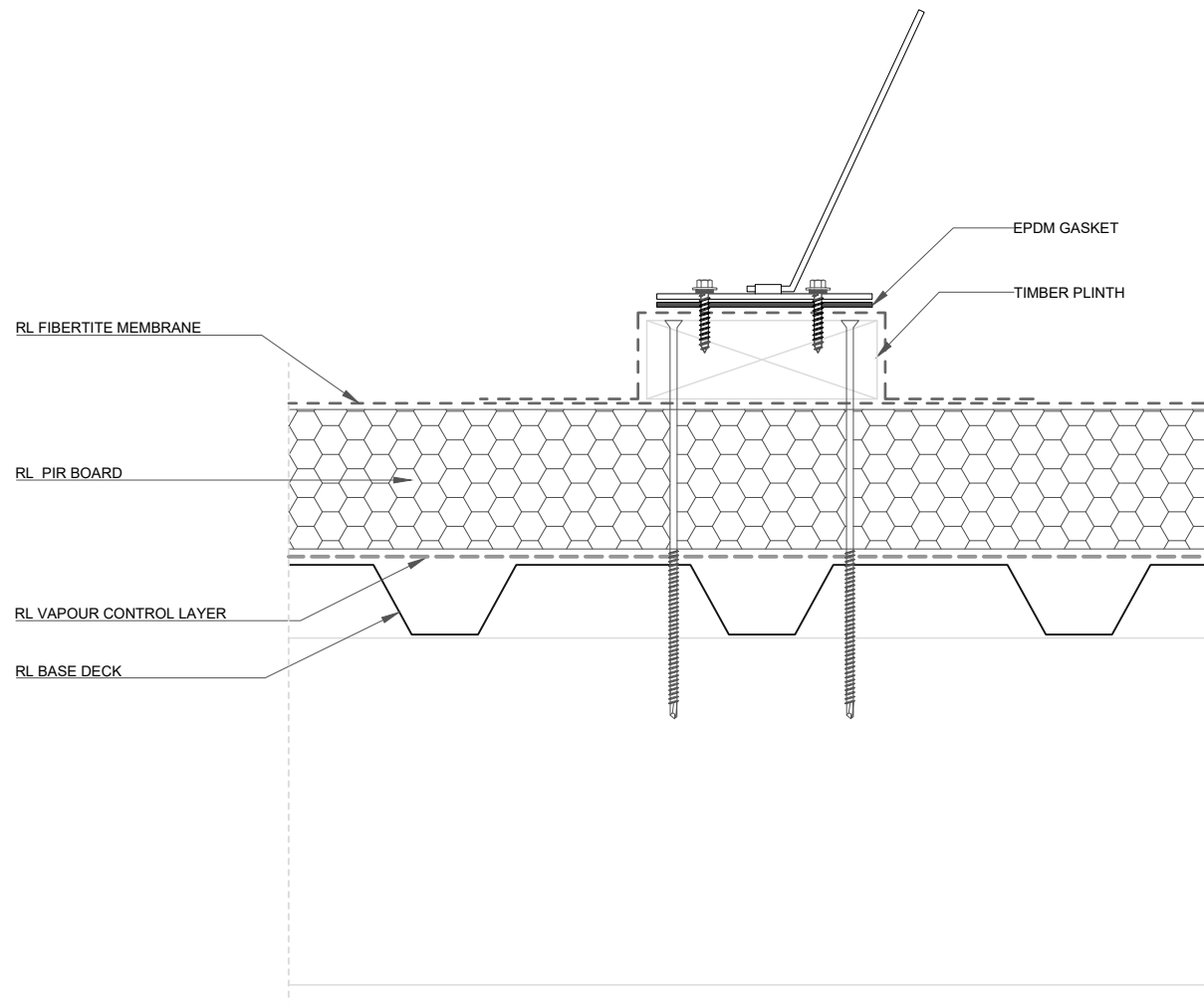












ROOFLOGIC SYSTEM:
ULTRATHERM XTREME
(SINGLE PLY MEMBRANE)

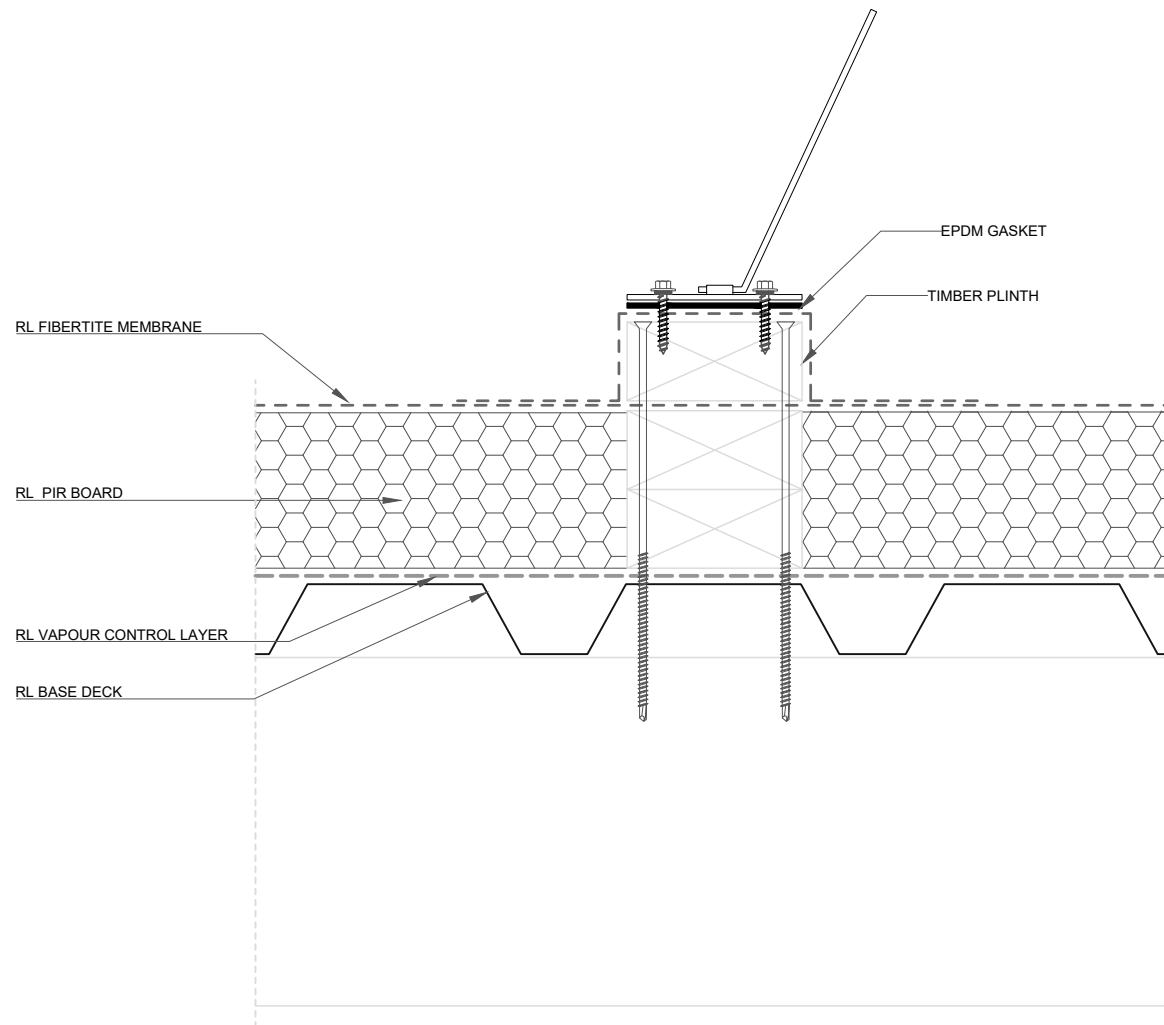
DRAWING:
PLINTH 50KG PER 100X100MM MAX.
LOADING

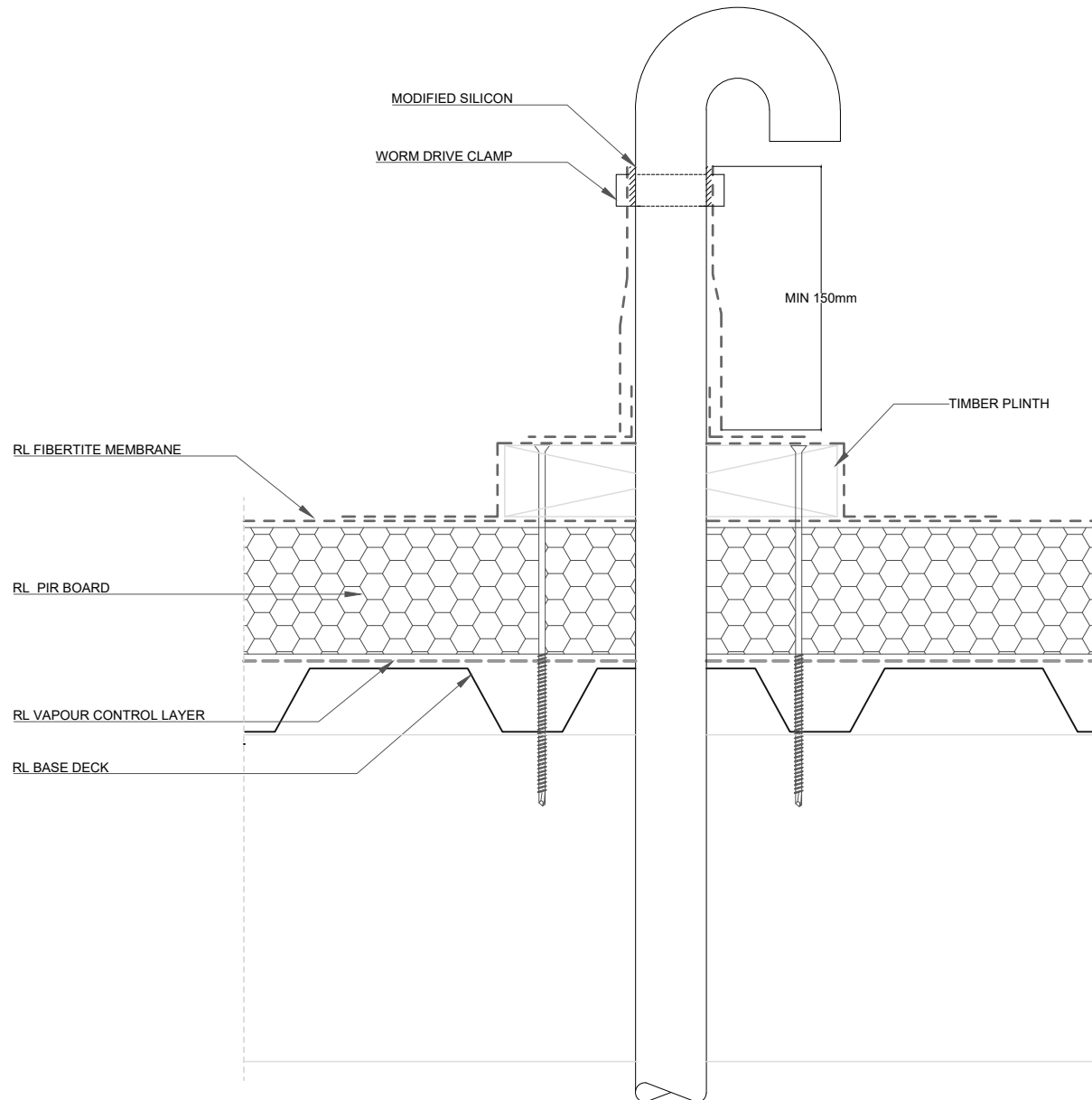
DRAWING NUMBER: 400

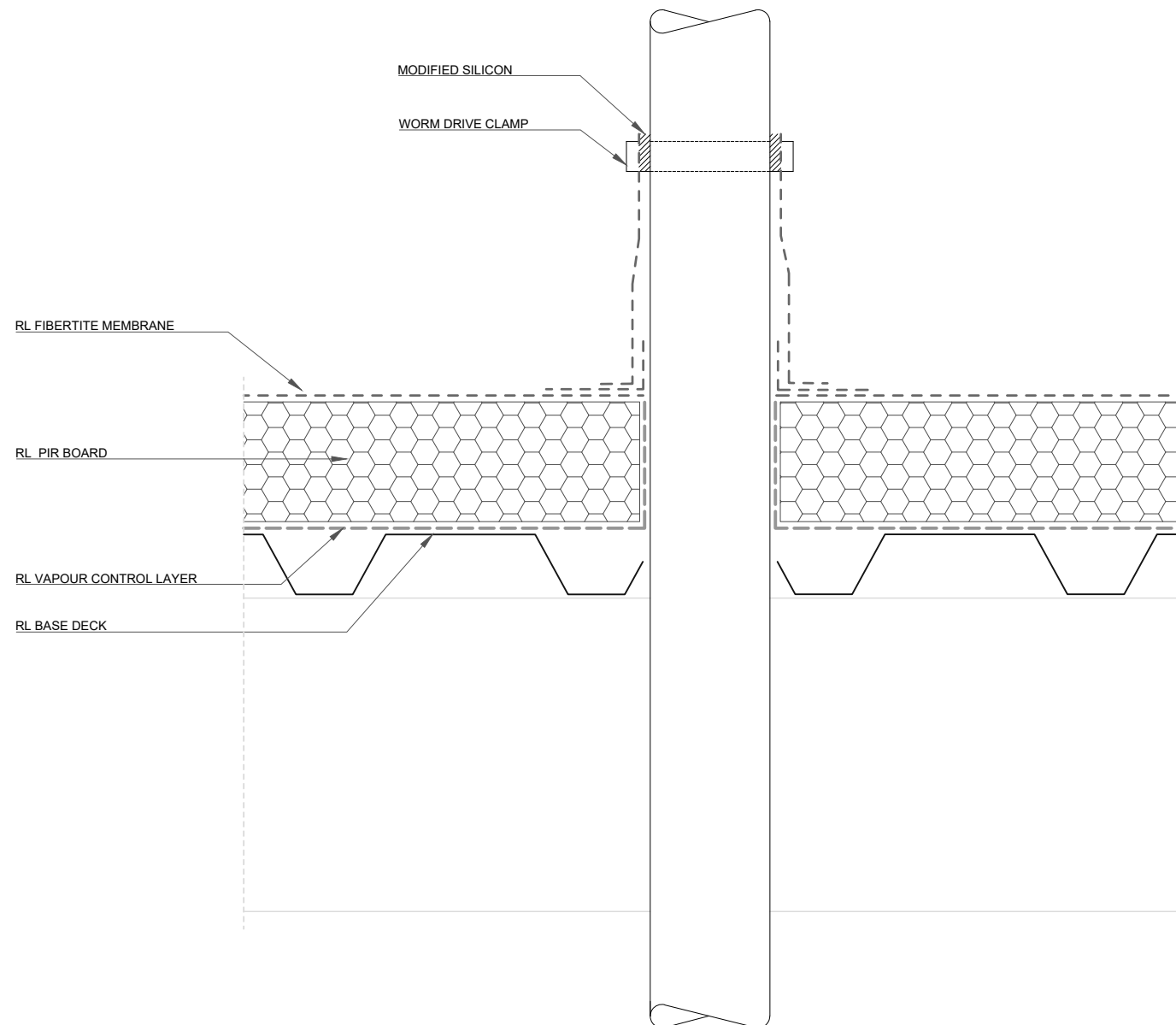
DRAWN SCALE: NTS

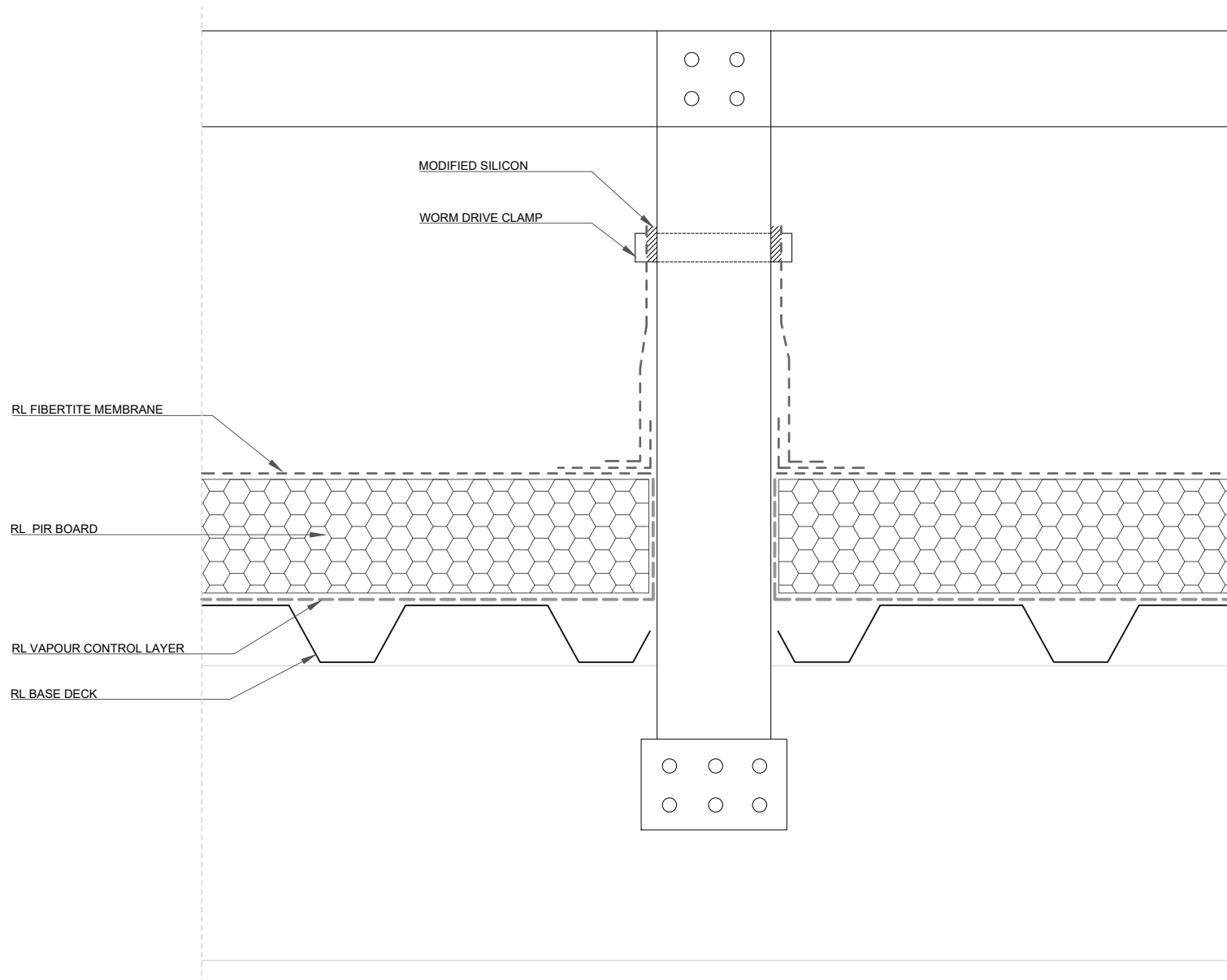
ROOFLOGIC.CO.NZ

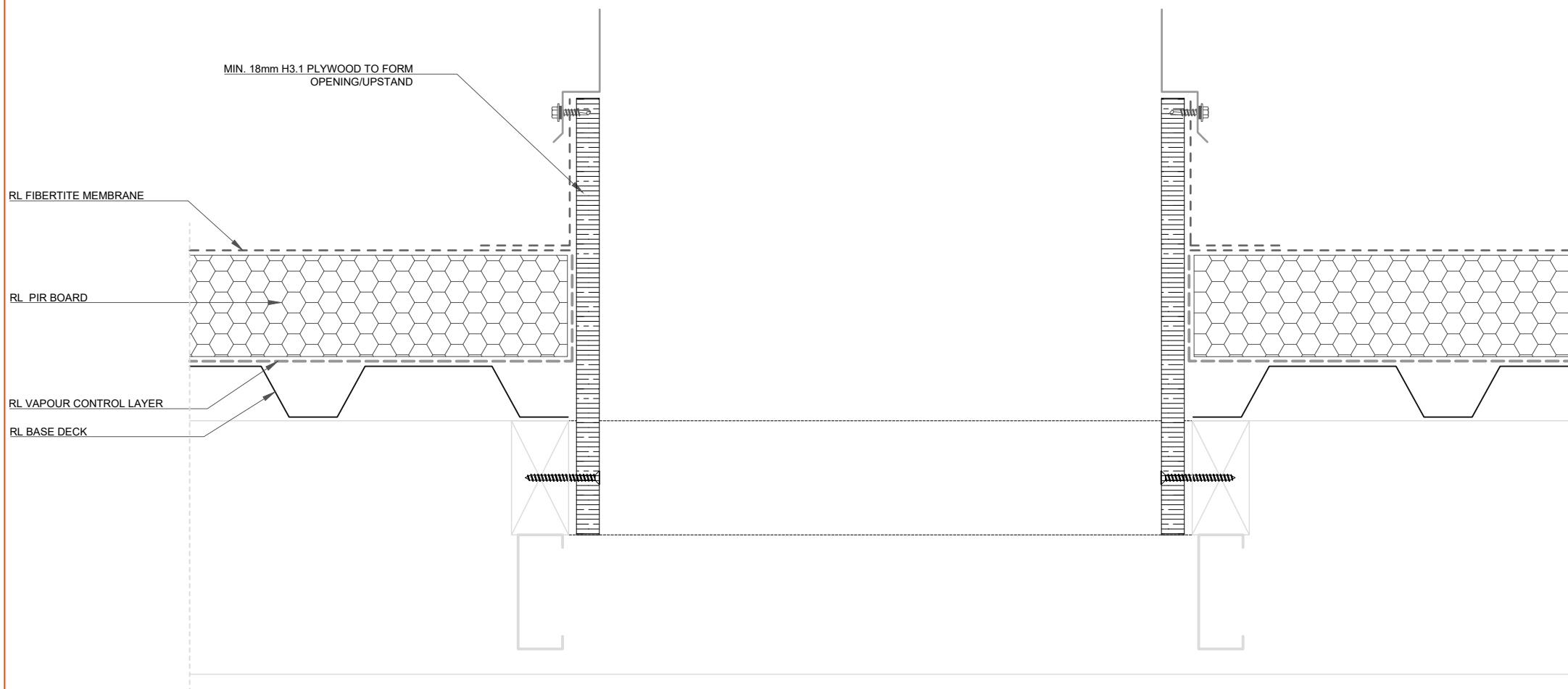
This drawing is the copyright of Rooflogic. Modification of details for job specification requirements must be approved by Rooflogic. The building designer is ultimately responsible to ensure all building work is designed and constructed according to Building Code requirements, NZ standards and best code of practice industry guidelines. All components must be supplied by Rooflogic. Rooflogic reserves the right to alter or upgrade details at any time without prior notice.

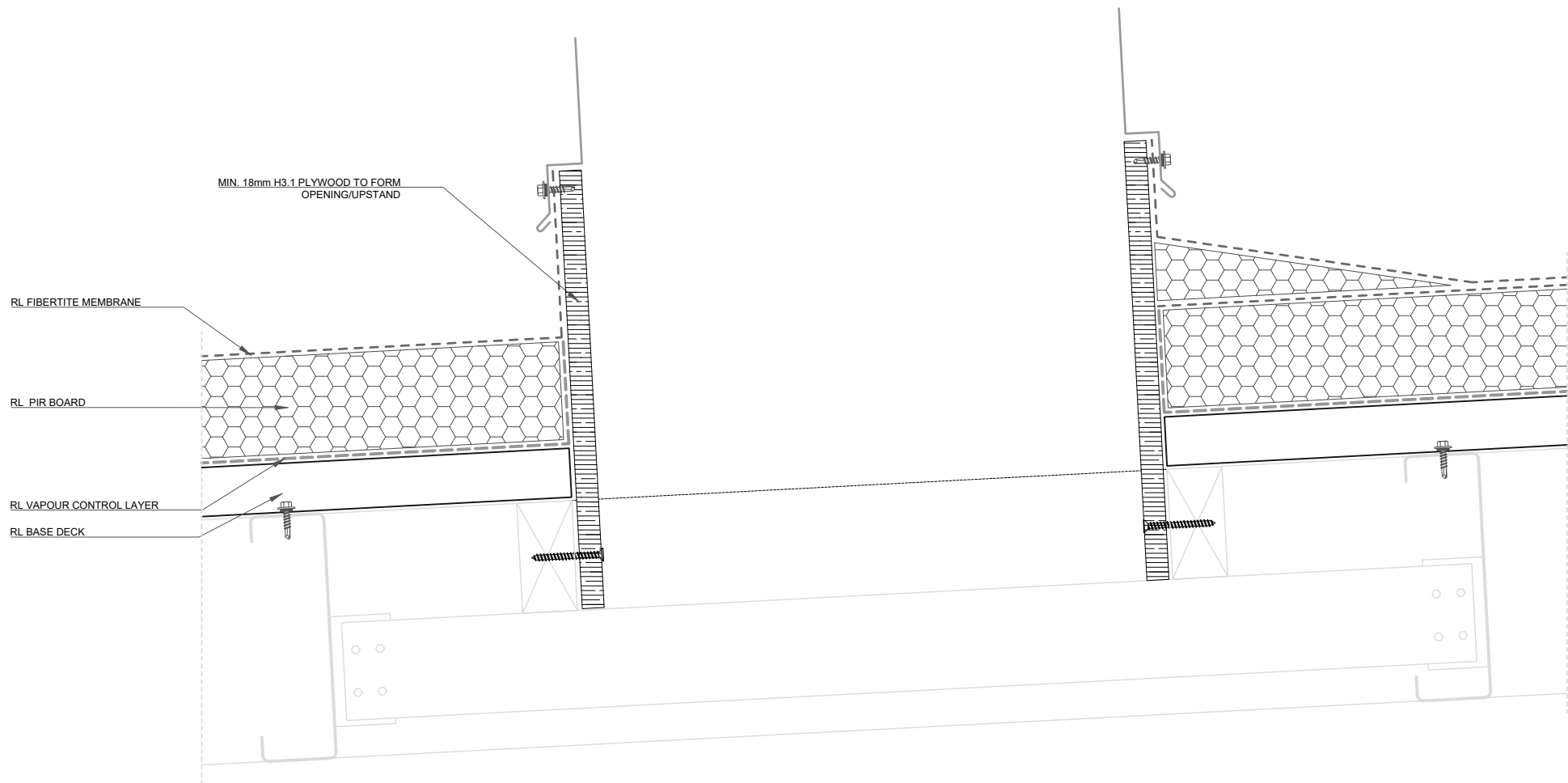


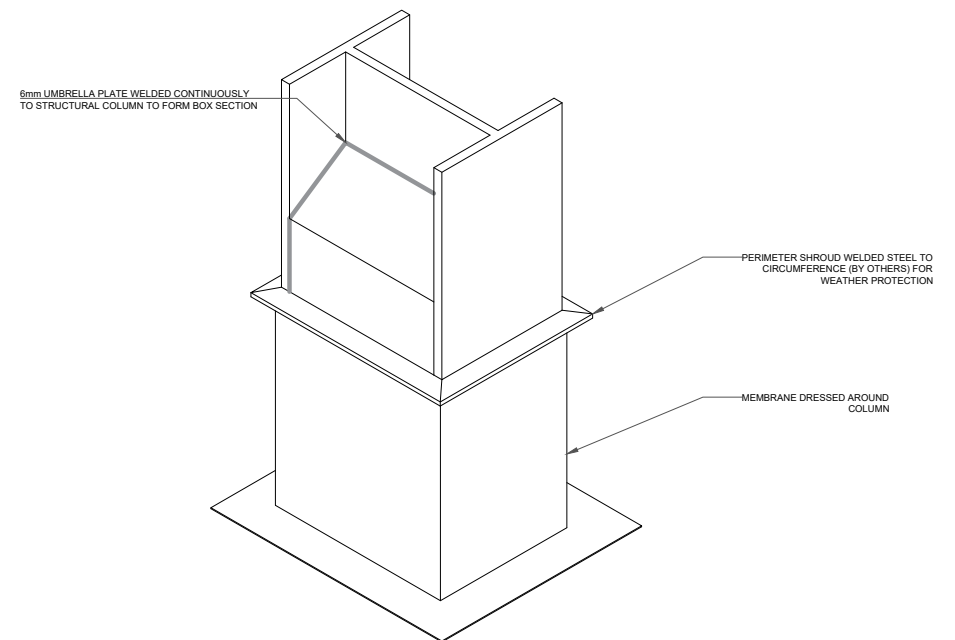
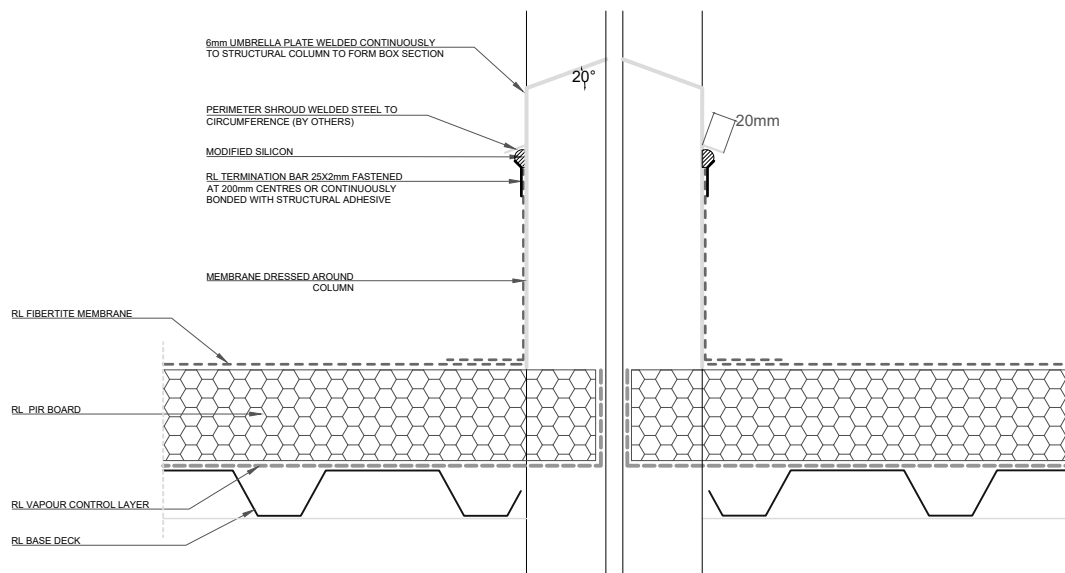


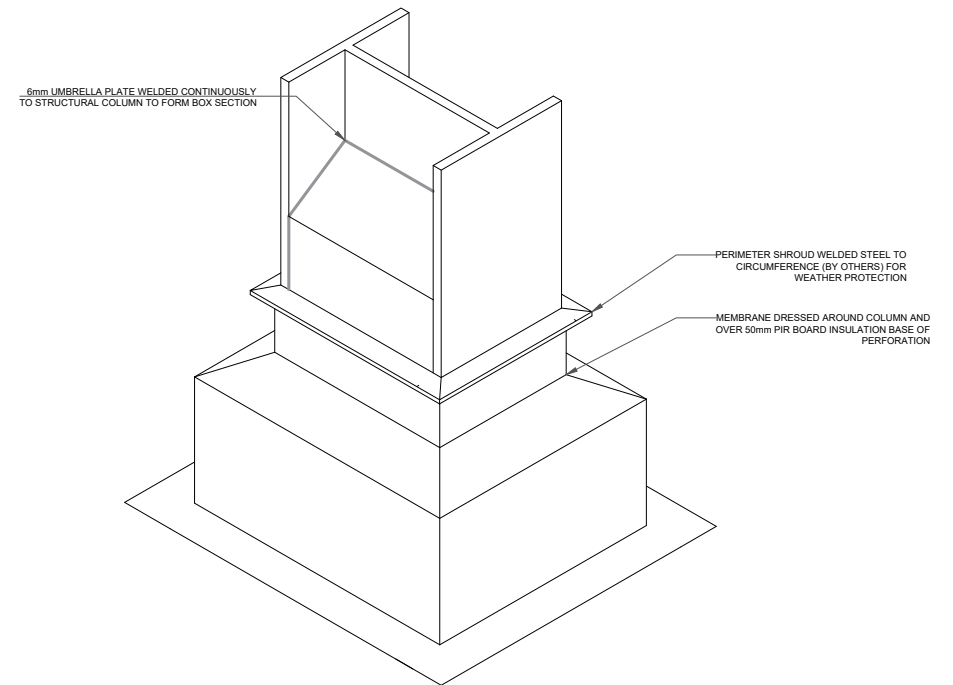
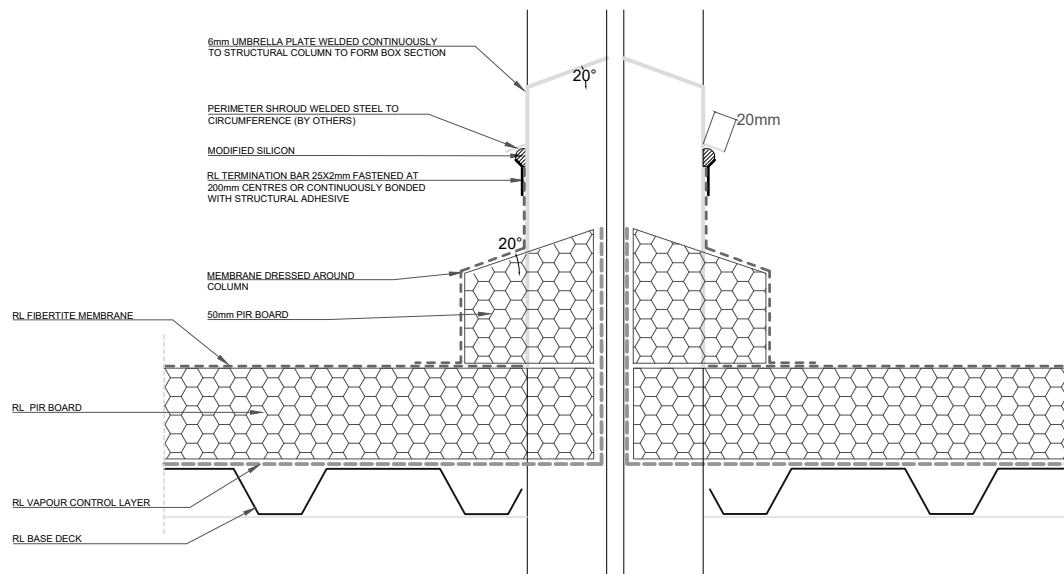


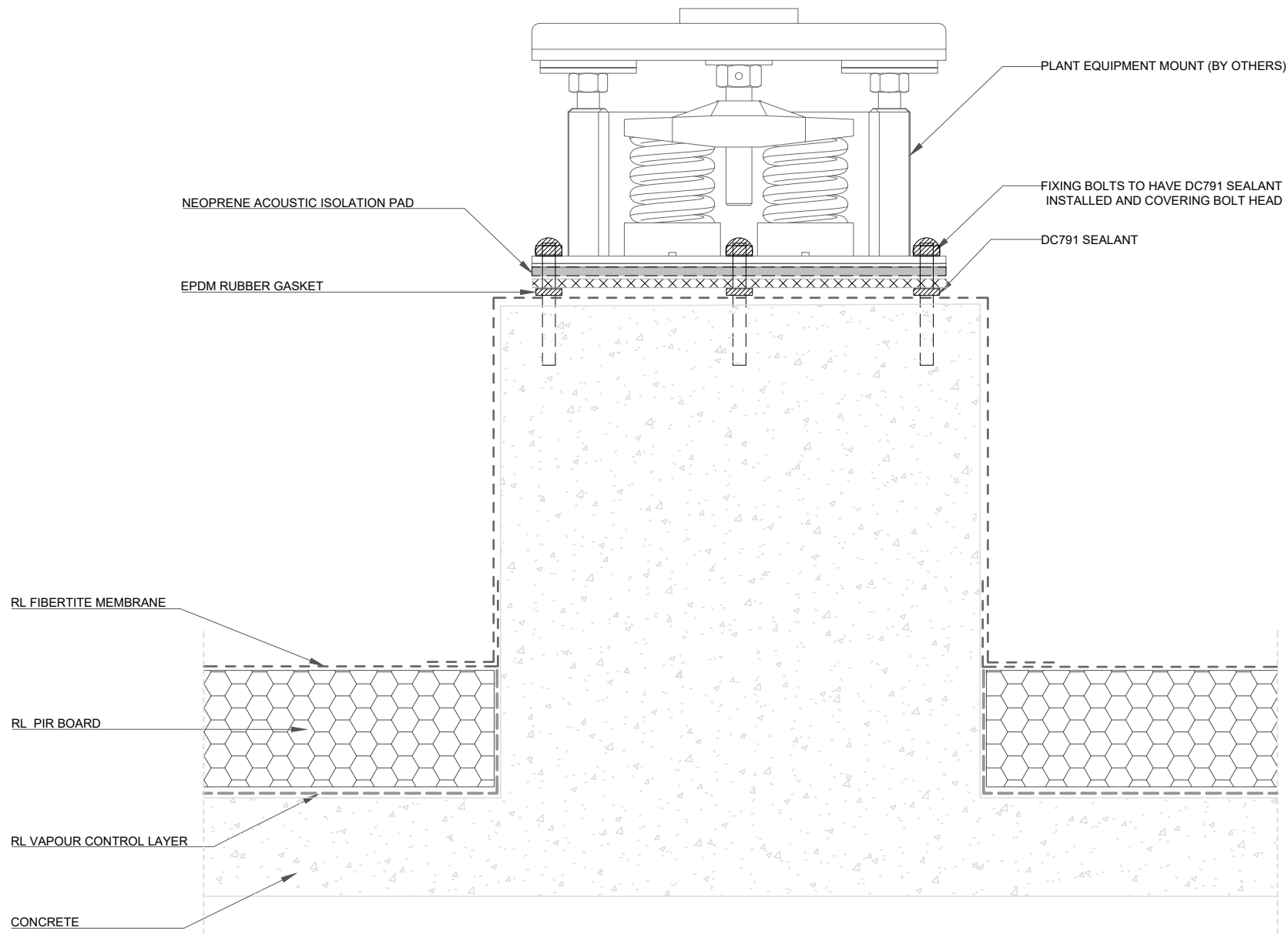


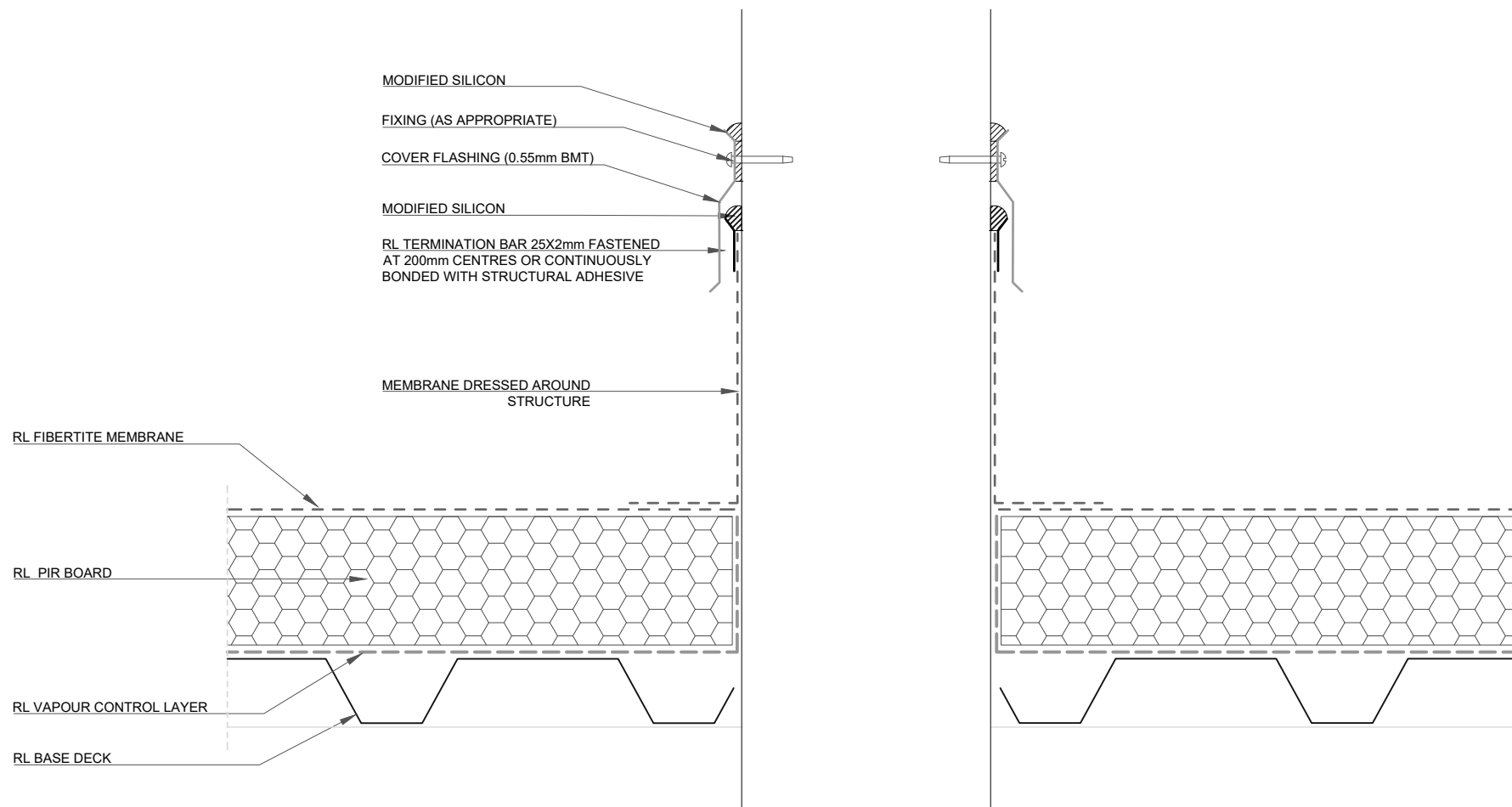


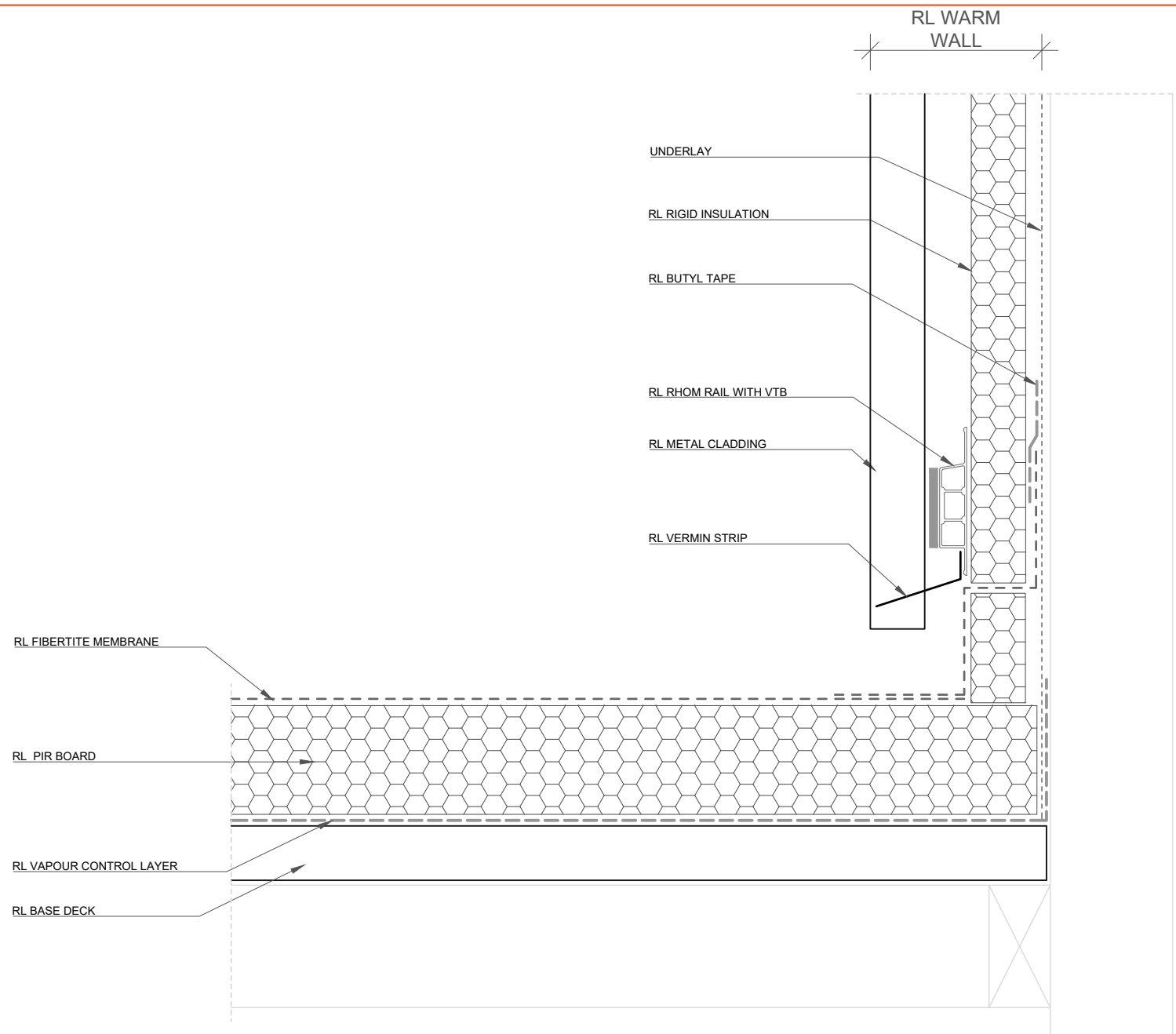


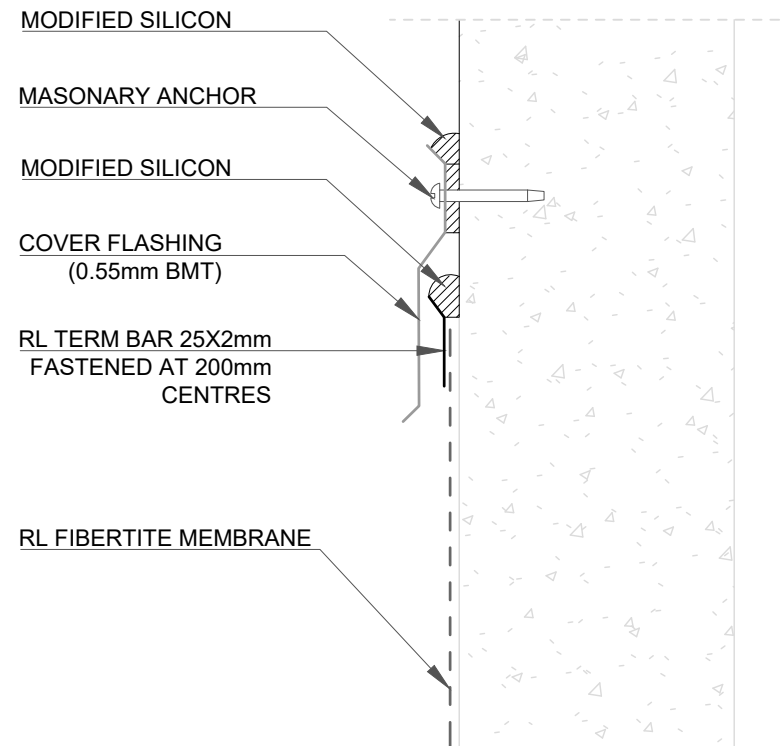


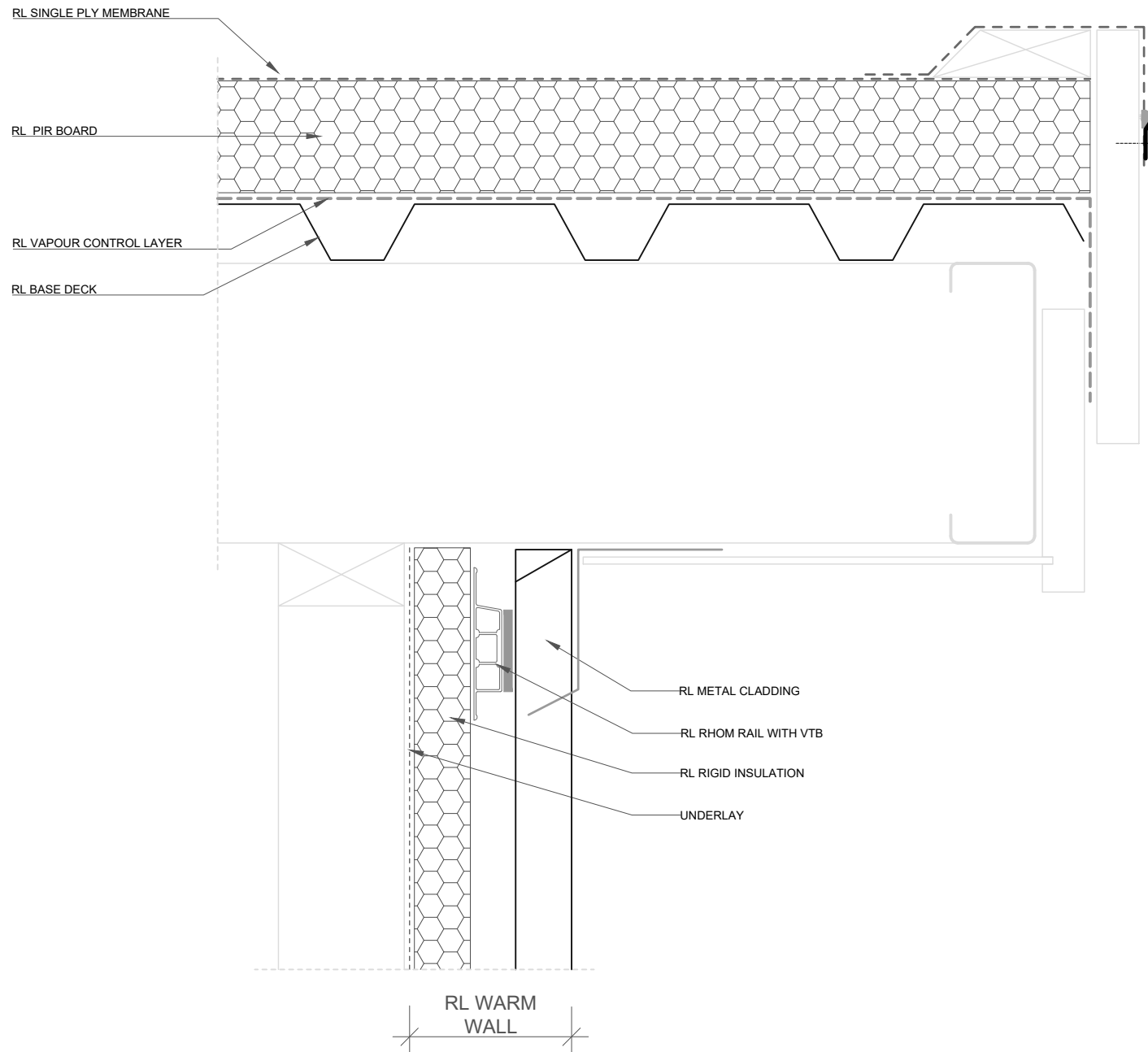


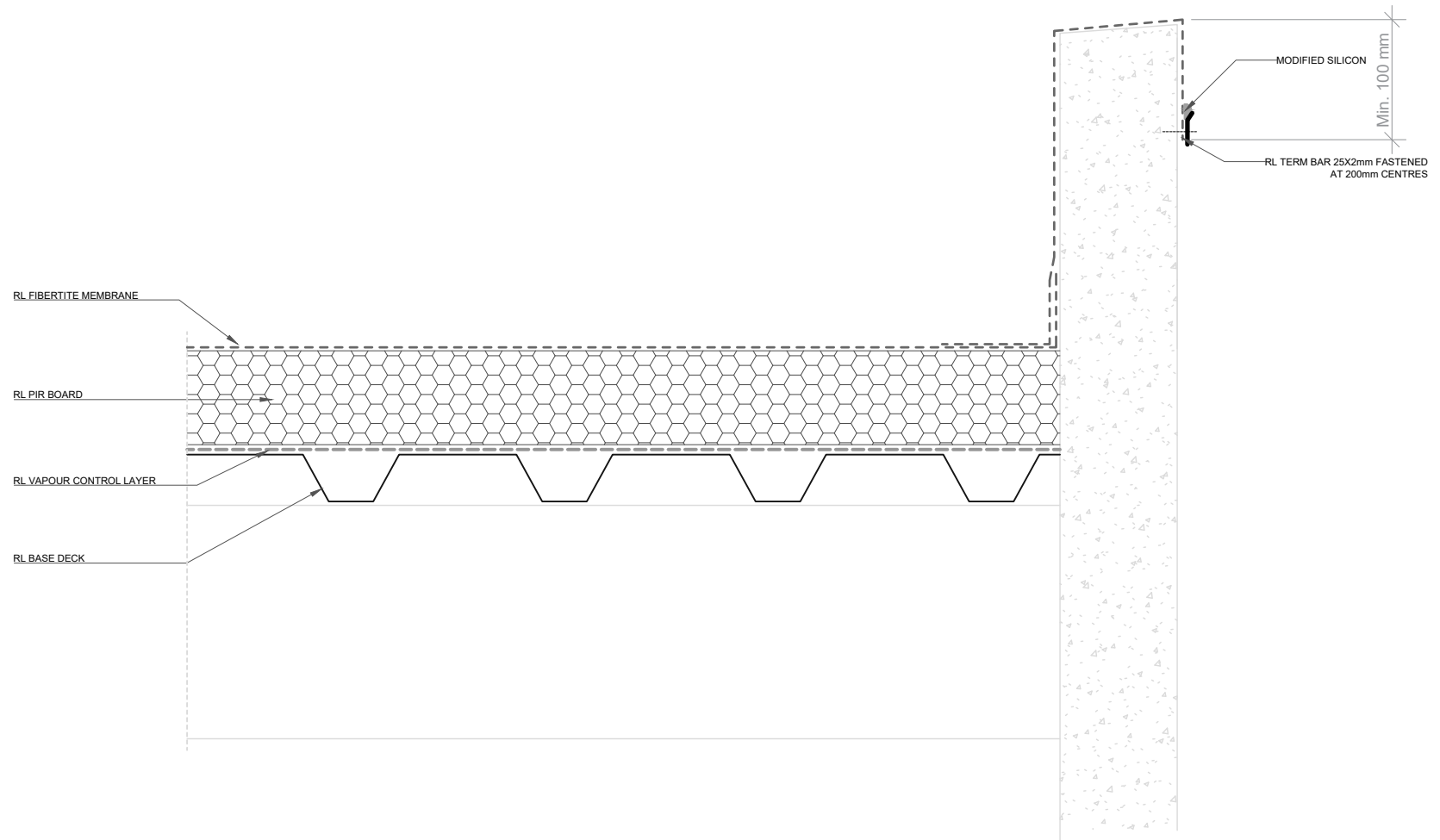


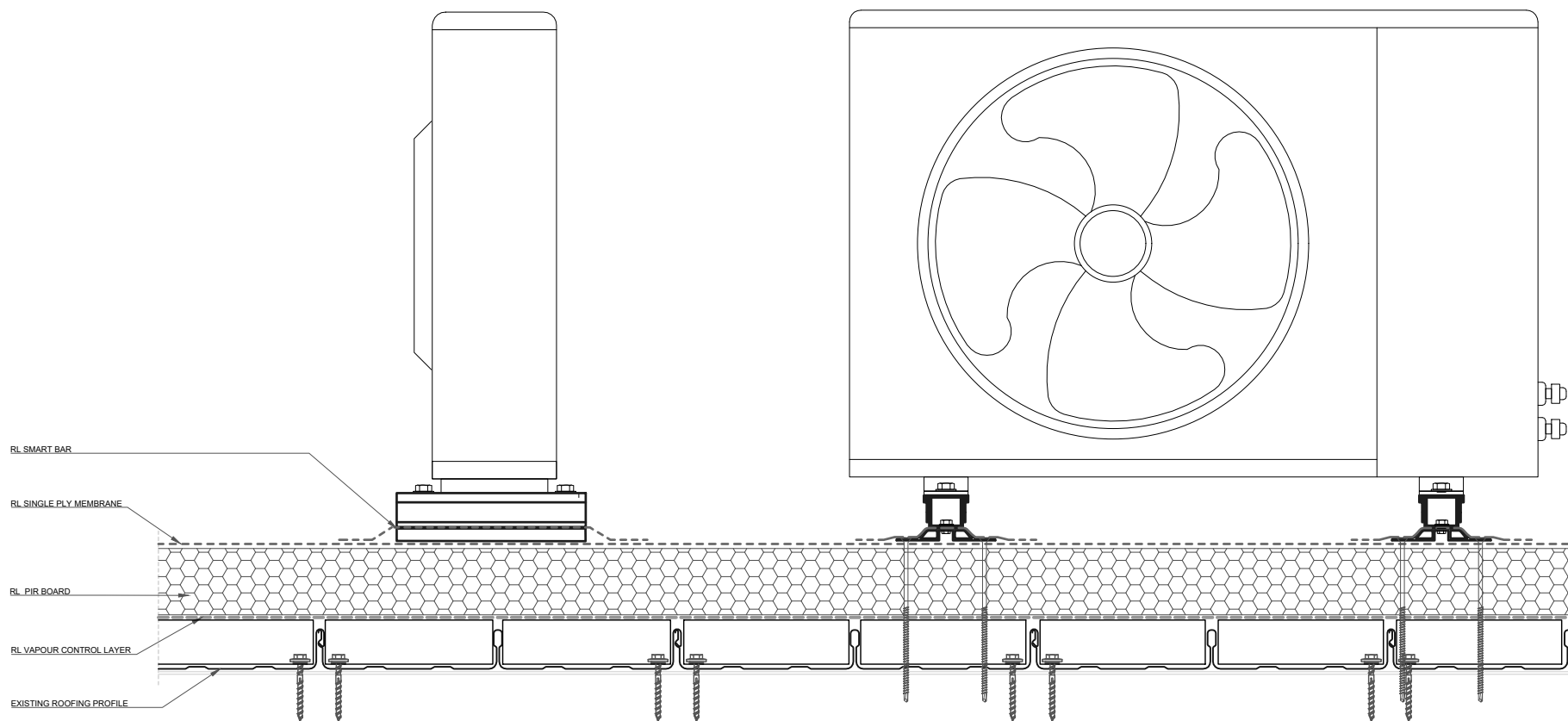












ROOFLOGIC SYSTEM:
ULTRATHERM XTREME
(SINGLE PLY MEMBRANE)

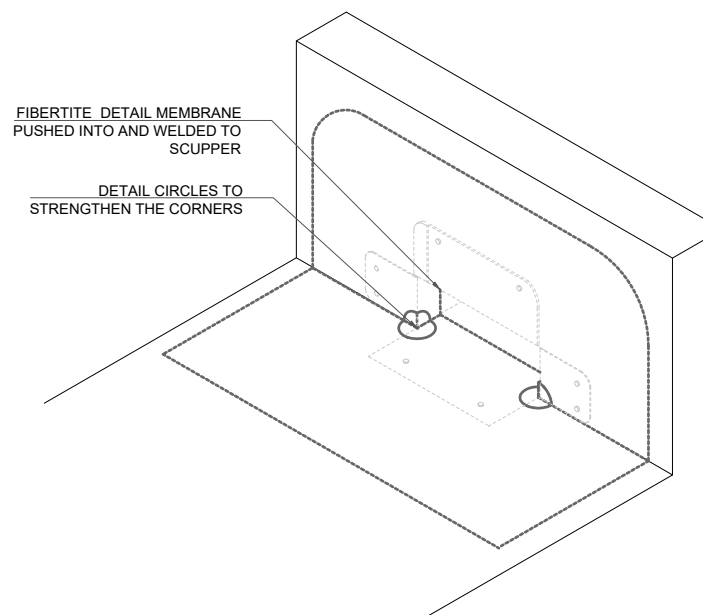
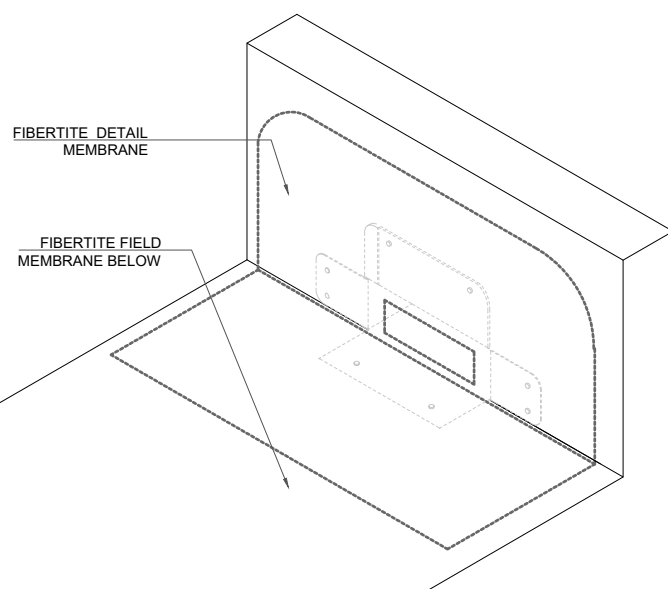
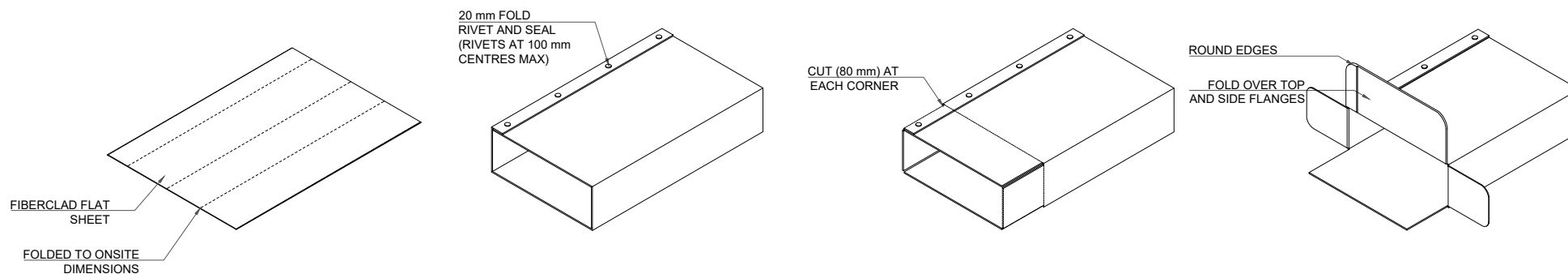
DRAWING:
RL SMART BAR – TYPICAL

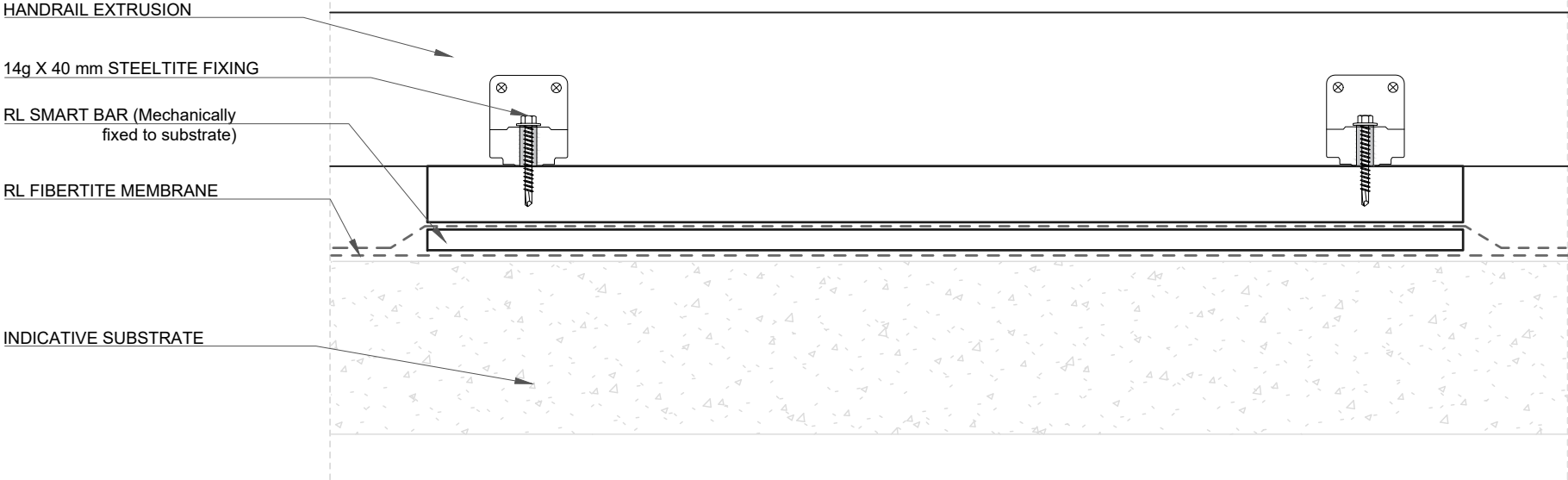
DRAWING NUMBER: 600

DRAWN SCALE: NTS

ROOFLOGIC.CO.NZ

This drawing is the copyright of Rooflogic. Modification of details for job specification requirements must be approved by Rooflogic. The building designer is ultimately responsible to ensure all building work is designed and constructed according to Building Code requirements, NZ standards and best code of practice industry guidelines. All components must be supplied by Rooflogic. Rooflogic reserves the right to alter or upgrade details at any time without prior notice.





ROOFLOGIC SYSTEM:
ULTRATHERM XTREME
(SINGLE PLY MEMBRANE)

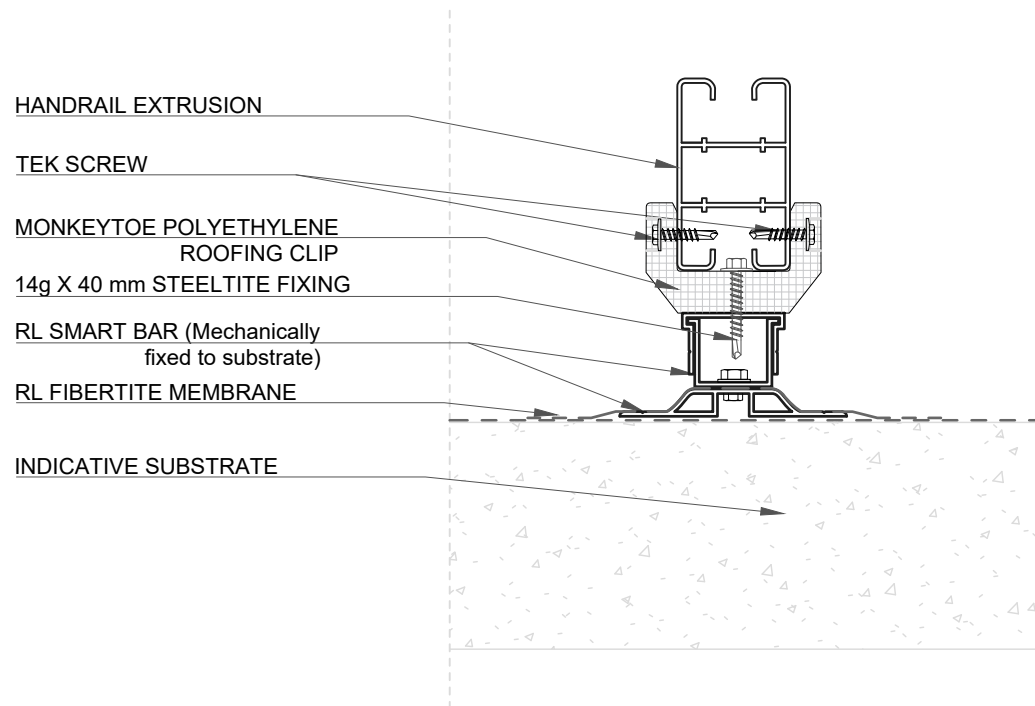
DRAWING:
CONNECTION OF MONKEYTOE ROOFING
CLIP TO SMART BAR

DRAWING NUMBER: 602

DRAWN SCALE: NTS

ROOFLOGIC.CO.NZ

This drawing is the copyright of Rooflogic. Modification of details for job specification requirements must be approved by Rooflogic. The building designer is ultimately responsible to ensure all building work is designed and constructed according to Building Code requirements, NZ standards and best code of practice industry guidelines. All components must be supplied by Rooflogic. Rooflogic reserves the right to alter or upgrade details at any time without prior notice.



POLYETHYLENE ROOFING CLIP

\\\\\\InDesign Files\\01 MASTERLINKS\\Monkeytoe-NZ-Fixings-Extrusions-6.jpg



ROOFLOGIC SYSTEM:
ULTRATHERM XTREME
(SINGLE PLY MEMBRANE)

DRAWING:
SECTION: CONNECTION OF MONKEYTOE
HORIZONTAL EXTRUSION TO SMART BAR

DRAWING NUMBER: 603

DRAWN SCALE: NTS

ROOFLOGIC.CO.NZ

This drawing is the copyright of Rooflogic. Modification of details for job specification requirements must be approved by Rooflogic. The building designer is ultimately responsible to ensure all building work is designed and constructed according to Building Code requirements, NZ standards and best code of practice industry guidelines. All components must be supplied by Rooflogic. Rooflogic reserves the right to alter or upgrade details at any time without prior notice.